



CATALOGUE

 **VALME**
CONCRETE DISTRIBUTION SYSTEMS





COMPANY PROFILE



Rogolo (Italy)



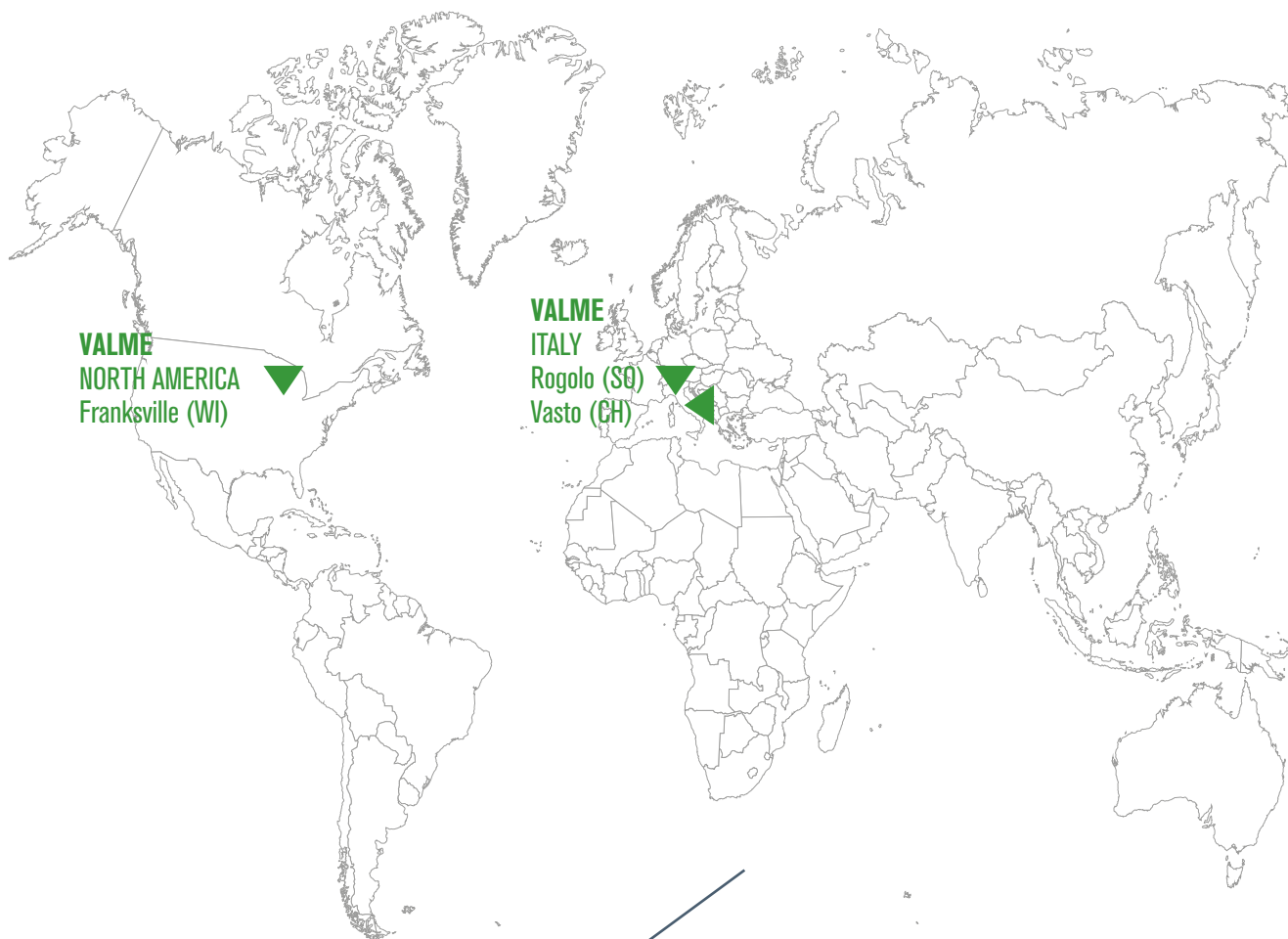
Vasto (Italy)



Franksville (Wisconsin, USA)

Strongly customer-oriented, with decades-long experience in technical assistance in the field on any type of concrete machine, Valme offers its customers tailor-made components for every situation, with a strong focus on product quality and delivery availability. Valme's mission is to offer "the right material in the right place" to ensure that its entire range of pipes wears less and more uniformly, so that they can be replaced in their entirety only when necessary.

Azienda fortemente orientata al cliente con decennale esperienza nel settore delle tubazioni ed attrezzature per il trasporto del calcestruzzo, Valme offre un'ampia gamma di prodotti a catalogo e progettazione su misura, con un elevato livello di qualità ed affidabilità ed attenzione al servizio nella consegna. Il claim di Valme, "the right pipe in the right place", significa fornire al cliente la miglior gamma completa di tubazioni per il calcestruzzo per le diverse e specifiche applicazioni, limitando al massimo l'usura ed i conseguenti interventi di manutenzione e ripristino.



VALME GROUP
42.500 m² Total area
18.000 m² Covered area
800 m² Offices
50 Countries served

Founded in Rogolo (Sondrio) in 1985 as a service centre for concrete machinery transport and laying machines, Valme is today an international leader in the design and production of concrete delivery pipes and accessory components.

Nata a Rogolo, nel 1985, come centro di assistenza tecnica per le macchine nel settore del calcestruzzo, oggi Valme è una realtà internazionale leader nella produzione e progettazione di sistemi, componenti ed accessori per il trasporto del calcestruzzo.



Automation: high performance and precision production processes.

Cutting-edge equipment and increasingly automated production processes are the company's winning strategy, guaranteeing not only greater production capacity and reliability, but also higher standards of quality.

Automazione: elevate prestazioni e precisione.

Attrezzature all'avanguardia e processi produttivi automatizzati rappresentano la strategia vincente per garantire una maggior capacità produttiva, affidabilità e elevati standard qualitativi.



01. Foundry - Fonderia

Two foundry plants, one of which is the latest generation, are among the main investments that the company has made.

Due impianti, di cui uno di ultima generazione, sono tra gli investimenti più importanti fatti dall'Azienda.



02. Hardening - Tempra

The induction hardening process, one of Valme's operations par excellence, increases the wear resistance of the pipe products.

Il processo di tempra, una delle eccellenze di Valme, assicura un'alta resistenza all'usura. Macchinari automatizzati adattano il processo a tutti i tipi di materiale e di spessore.



03. Machining Collars and Couplings - Lavorazioni di giunti e collari

Five numerically controlled lathes and four boring machines are being used to automate the process in this area.

L'impiego di cinque torni a controllo numerico e quattro alesatrici automatizza le operazioni in questa area.



04. Steelworks - Carpenteria

In this area, straight, shaped and offset pipes are processed. Shaped pipes are customized to customer requirements.

In questa area vengono lavorati tubi e curve, standard e su misura.



05. Welding - Saldatura

A fully automated process is the pride of Valme. Two robots guarantee absolute repeatability on welds, while maintaining high productivity and maximum weld seam safety.

Orgoglio di Valme, il processo di saldatura, completamente automatizzato, impiega due robot che garantiscono la ripetibilità delle saldature mantenendo una grande capacità produttiva e la massima tenuta di sicurezza.



06. Painting - Verniciatura

Two fully automatic systems, one with an integral cycle of sandblasting, painting and firing, and the other one for oversize pipes and smaller pieces.

Due sistemi automatici, di cui uno con ciclo integrale di sabbatura, verniciatura e cottura, e l'altro per tubi fuori misura e piccole parti.



07. Forging - Forgiatura

This fully automatic line for forging guarantees the production of quality couplings and increased productivity.

La linea automatizzata per la forgiatura, assicura una maggiore capacità produttiva mantenendo un elevato standard qualitativo dei prodotti. Per la forgiatura e per la successiva fase di stampaggio, vengono impiegati due robot.



08. Quality - Qualità

Valme ensures quality in every step of the process by applying continuous in-process quality control. A test laboratory and new devices have been implemented to ensure accurate measurements and dimensional checks, while adhering to ISO standards.

Il sistema di Controllo Qualità di Valme garantisce il rispetto dei più alti standard qualitativi in ogni fase del processo. Test di laboratorio e strumentazione all'avanguardia, permettono misurazioni accurate secondo gli standard ISO. Principali misurazioni: pressione, durezza, tenuta idraulica, metallografia e analisi chimica.

INDEX



10. Connecting systems



20. Single layer pipe systems



30. Hardened pipe systems



40. Double layer pipe systems



50. Back end kits



60. Rubber hose & nozzle



70. Shut-Off and diversion valves



80. Booms



90. Cleaning systems



100. Accessories

10

CONNECTING SYSTEMS



COUPLINGS

GIUNTI

GROOVED SYSTEM "G"

SISTEMA GROOVED "G"

Non Adjustable Snap Coupling - short lever

Giunto fisso - leva corta

DESCRIPTION | DESCRIZIONE

Drop forged steel couplings suitable for standard application

Giunto in acciaio stampato a caldo utilizzabile per applicazioni standard

WORKING PRESSURE:

85 bar - according to ISO EN 12001: 2012

PRESSIONE DI LAVORO:

85 bar - secondo ISO EN 12001: 2012



| D.N. | | MODEL - Tipo | PART NUMBER - Codice | kg | lbs |
|------|-----|--------------|----------------------|------|-------|
| in | mm | | | | |
| 2" | 50 | FC 20 G - LC | K000908333 | 1.05 | 2.31 |
| 2.5" | 65 | FC 25 G - LC | K000908332 | 1.60 | 3.53 |
| 3" | 75 | FC 30 G - LC | K000223660 | 2.25 | 4.96 |
| 4" | 100 | FC 40 G - LC | S3034302 | 3.50 | 7.71 |
| 5" | 125 | FC 50 G - LC | S3034303 | 5.00 | 11.03 |

- All couplings can be galvanized / *Tutti i giunti possono essere zincati*
 All couplings can have grease fittings / *Tutti i giunti possono avere ingrassatore*

COUPLINGS

GIUNTI

GROOVED SYSTEM "G"

SISTEMA GROOVED "G"

Non Adjustable Snap Coupling - high lever

Giunto fisso - leva alta

DESCRIPTION | DESCRIZIONE

Drop forged steel couplings suitable for standard application

Giunto in acciaio stampato a caldo utilizzabile per applicazioni standard

WORKING PRESSURE:

85 bar - according to ISO EN 12001: 2012

PRESSIONE DI LAVORO:

85 bar - secondo ISO EN 12001: 2012



| D.N. | | MODEL - Tipo | PART NUMBER - Codice | kg | lbs |
|------|-----|--------------|----------------------|------|-------|
| in | mm | | | | |
| 2.5" | 65 | FC 25 G | K000908332 | 1.60 | 3.53 |
| 3" | 75 | FC 30 G | S3005580 | 2.25 | 4.96 |
| 4" | 100 | FC 40 G | S3034304 | 3.50 | 7.71 |
| 5" | 125 | FC 50 G | S3005601 | 5.00 | 11.3 |
| 6" | 150 | FC 60 G | S3012243 | 5.50 | 12.12 |

- All couplings can be galvanized / *Tutti i giunti possono essere zincati*
 All couplings can have grease fittings / *Tutti i giunti possono avere ingrassatore*

GASKETS

GUARNIZIONI

GROOVED SYSTEM "G"

SISTEMA GROOVED "G"

Oil resistant rubber gasket GU type
Guarnizione in gomma anti-olio modello GU



| D.N. | | MODEL - Tipo | PART NUMBER - Codice | kg | lbs |
|------|-----|--------------|----------------------|-------|-------|
| in | mm | | | | |
| 2" | 50 | GU 20 | K000908336 | 0.042 | 0.092 |
| 2.5" | 65 | GU 25 | K000908335 | 0.057 | 0.125 |
| 3" | 75 | GU 30 | K000908334 | 0.072 | 0.159 |
| 4" | 100 | GU 40 | K000200312 | 0.105 | 0.231 |
| 5" | 125 | GU 50 | S2033711 | 0.140 | 0.308 |
| 6" | 150 | GU 60 | K000052541 | 0.170 | 0.375 |
| 8" | 200 | GU 80 | K000201920 | 0.294 | 0.648 |

Other sizes upon request / *Altre misure a richiesta*

Oil resistant rubber gasket GUV type
Guarnizione in gomma anti-olio modello GUV



| D.N. | | TIPO - Type | PART NUMBER - Codice | kg | lbs |
|------|-----|-------------|----------------------|-------|-------|
| in | mm | | | | |
| 2" | 50 | GUV 20 | K3012317 | 0.048 | 0.106 |
| 2.5" | 65 | GUV 25 | K3012318 | 0.062 | 0.137 |
| 3" | 75 | GUV 30 | K3012319 | 0.080 | 0.176 |
| 4" | 100 | GUV 40 | K3012320 | 0.130 | 0.286 |

COLLARS

COLLARINI

GROOVED SYSTEM "G"

SISTEMA GROOVED "G"

Single Layer Collar
Collarino standard



| D.N. | | MODEL - Tipo | PART NUMBER - Codice | kg | lbs |
|------|-----|--------------|----------------------|------|------|
| in | mm | | | | |
| 2" | 50 | COLL 20 G | S3005870 | 0.24 | 0.53 |
| 2.5" | 65 | COLL 25 G | S3005871 | 0.33 | 0.73 |
| 3" | 75 | COLL 30 G | S3008774 | 0.52 | 1.14 |
| 4" | 100 | COLL 40 G | S3011974 | 0.65 | 1.43 |
| 5" | 125 | COLL 50 G | S000058732 | 0.87 | 1.92 |
| 6" | 150 | COLL 60 G | S000052471 | 1.24 | 2.73 |
| 8" | 200 | COLL 80 G | S3005874 | 1.80 | 3.97 |

Other sizes upon request / Altre misure a richiesta

COUPLINGS

GIUNTI

METRIC SYSTEM "M"

SISTEMA METRICO "M"

Adjustable snap coupling - lever
Giunto regolabile a leva

DESCRIPTION | DESCRIZIONE

Drop forged steel couplings suitable for standard application

Giunto in acciaio stampato a caldo utilizzabile per applicazioni standard

WORKING PRESSURE:

85 bar - according to ISO EN 12001: 2012

PRESSIONE DI LAVORO:

85 bar - secondo ISO EN 12001: 2012



| D.N. | | MODEL - Tipo | PART NUMBER - Codice | kg | lbs |
|------|-----------|--------------|----------------------|------|-------|
| in | mm | | | | |
| 3.5" | 80/97.0 | AC 34 M | S3012226 | 3.05 | 6.73 |
| 4" | 100/114.3 | AC 40 M | S2022806 | 3.80 | 8.38 |
| 4.5" | 100/127.0 | AC 45 M | S2022807 | 5.10 | 11.24 |
| 5" | 125/141.3 | AC 50 M | S3012228 | 5.45 | 12.01 |
| 5.5" | 125/148.0 | AC 55 M | S2022808 | 5.55 | 12.24 |
| 6.5" | 150/178.0 | AC 65 M | S3005648 | 6.55 | 14.44 |

- All couplings can be galvanized / *Tutti i giunti possono essere zincati*
All couplings can have grease fittings / Tutti i giunti possono avere ingrassatore

COUPLINGS

GIUNTI

METRIC SYSTEM "M"

SISTEMA METRICO "M"

Adjustable one bolt coupling
Giunto regolabile a un bullone

DESCRIPTION | DESCRIZIONE

Drop forged steel couplings suitable for standard application

Giunto in acciaio stampato a caldo utilizzabile per applicazioni standard

WORKING PRESSURE:

85 bar - according to ISO EN 12001: 2012

PRESSIONE DI LAVORO:

85 bar - secondo ISO EN 12001: 2012



| D.N. | | MODEL - Tipo | PART NUMBER - Codice | kg | lbs |
|------|-----------|--------------|----------------------|------|-------|
| in | mm | | | | |
| 4.5" | 100/127.0 | BC 45 M | K000227592 | 5.10 | 11.24 |
| 5.5" | 125/148.0 | BC 55 M | K000227198 | 5.55 | 12.24 |

- All couplings can be galvanized / *Tutti i giunti possono essere zincati*
All couplings can have grease fittings / Tutti i giunti possono avere ingrassatore

COUPLINGS

GIUNTI

METRIC SYSTEM "M"

SISTEMA METRICO "M"

Two bolts coupling / *Giunto a due bulloni*

DESCRIPTION | DESCRIZIONE

Drop forged steel couplings suitable for standard application
Giunto in acciaio stampato a caldo utilizzabile per applicazioni standard

WORKING PRESSURE: 85 bar - according to ISO EN 12001: 2012
PRESSIONE DI LAVORO: 85 bar - secondo ISO EN 12001: 2012



| D.N. | | MODEL - Tipo | PART NUMBER - Codice | kg | lbs |
|------|-----|----------------|----------------------|------|------|
| in | mm | | | | |
| 4.5" | 100 | BC 45 M 2 BOLT | S2022776 | 3.70 | 8.16 |
| 5.5" | 125 | BC 55 M 2 BOLT | K000221985 | 4.15 | 9.15 |

- All couplings can be supplied complete with grease nipple, according to the customer specifications
Tutti i giunti possono essere forniti completi di ingrassatore, secondo le specifiche del cliente
- All couplings can be galvanized / *Tutti i giunti possono essere zincati*

Two bolts coupling High-pressure / *Giunto a due bulloni per alta pressione*

DESCRIPTION | DESCRIZIONE

Drop forged steel couplings suitable for standard application
Giunto in acciaio stampato a caldo utilizzabile per applicazioni standard

WORKING PRESSURE: 85 bar - according to ISO EN 12001: 2012
PRESSIONE DI LAVORO: 85 bar - secondo ISO EN 12001: 2012



| D.N. | | MODEL - Tipo | PART NUMBER - Codice | kg | lbs |
|------|-----|----------------|----------------------|----|-------|
| in | mm | | | | |
| 5.5" | 125 | BC 55 M 2 BOLT | S3005537 | 6 | 13.23 |

- All couplings can be galvanized / *Tutti i giunti possono essere zincati*

COUPLINGS

GIUNTI

METRIC SYSTEM "M"

SISTEMA METRICO "M"

Non-adjustable snap coupling - short lever

Giunto fisso - leva corta

DESCRIPTION | DESCRIZIONE

Drop forged steel couplings suitable for standard application

Giunto in acciaio stampato a caldo utilizzabile per applicazioni standard

WORKING PRESSURE:

85 bar - according to ISO EN 12001: 2012

PRESSIONE DI LAVORO:

85 bar - secondo ISO EN 12001: 2012



| D.N. | | MODEL - Tipo | PART NUMBER - Codice | kg | lbs |
|------|-----------|--------------|----------------------|------|-------|
| in | mm | | | | |
| 4" | 100/114.3 | FC 40 M - LC | K2034503 | 3.47 | 7.65 |
| 4.5" | 100/127.0 | FC 45 M - LC | S2022802 | 4.61 | 10.16 |
| 5" | 125/141.3 | FC 50 M - LC | S2022804 | 4.96 | 10.93 |
| 5.5" | 125/148.0 | FC 55 M - LC | S2022805 | 5.45 | 12.01 |

- All couplings can be galvanized / *Tutti i giunti possono essere zincati*
All couplings can have grease fittings / Tutti i giunti possono avere ingrassatore

COUPLINGS

GIUNTI

METRIC SYSTEM "M"

SISTEMA METRICO "M"

Non-adjustable snap coupling - high lever
Giunto fisso - leva alta

DESCRIPTION | DESCRIZIONE

Drop forged steel couplings suitable for standard application

Giunto in acciaio stampato a caldo utilizzabile per applicazioni standard

WORKING PRESSURE:

85 bar - according to ISO EN 12001: 2012

PRESSIONE DI LAVORO:

85 bar - secondo ISO EN 12001: 2012



| D.N. | | MODEL - Tipo | PART NUMBER - Codice | kg | lbs |
|------|-----------|--------------|----------------------|------|-------|
| in | mm | | | | |
| 3.5" | 80/97.0 | FC 34 - LA | S3005624 | 2.40 | 5.29 |
| 4" | 100/114.3 | FC 40 - LA | S3005603 | 3.50 | 7.71 |
| 4.5" | 100/127.0 | FC 45 - LA | S3005622 | 4.65 | 10.25 |
| 5" | 125/141.3 | FC 50 - LA | S3008985 | 5.00 | 11.03 |
| 5.5" | 125/148.0 | FC 55 - LA | S3009011 | 5.50 | 12.12 |
| 6" | 150/168.3 | FC 60 - LA | S3005569 | 5.50 | 12.12 |
| 7" | 180/200.0 | FC 70 - LA | S3009034 | 5.90 | 13.00 |

- All couplings can be galvanized / Tutti i giunti possono essere zincati
All couplings can have grease fittings / Tutti i giunti possono avere ingrassatore

COUPLINGS

GIUNTI

METRIC SYSTEM "M"

SISTEMA METRICO "M"

Aluminium non-adjustable snap coupling - short lever
Giunto fisso in alluminio - leva corta

DESCRIPTION | DESCRIZIONE

Drop forged aluminium couplings suitable for standard application

Giunto in alluminio stampato a caldo utilizzabile per applicazioni standard

WORKING PRESSURE:

85 bar - according to ISO EN 12001: 2012

PRESSIONE DI LAVORO:

85 bar - secondo ISO EN 12001: 2012



| D.N. | | MODEL - Tipo | PART NUMBER - Codice | kg | lbs |
|------|---------|----------------|----------------------|-----|------|
| in | mm | | | | |
| 4.5" | 100-127 | FC 45 - LC ALU | S2040461 | 1.9 | 4.18 |
| 5.5" | 125-148 | FC 55 - LC ALU | S3005604 | 2.8 | 6.17 |

COUPLINGS

GIUNTI

METRIC SYSTEM "M"

SISTEMA METRICO "M"

Non-adjustable snap coupling - high lever
Giunto fisso - leva alta

DESCRIPTION | DESCRIZIONE

Drop forged steel couplings suitable for standard application

Giunto in acciaio stampato a caldo utilizzabile per applicazioni standard

WORKING PRESSURE:

85 bar - according to ISO EN 12001: 2012

PRESSIONE DI LAVORO:

85 bar - secondo ISO EN 12001: 2012



| D.N. | | MODEL - Tipo | PART NUMBER - Codice | kg | lbs |
|------|---------|----------------|----------------------|-----|------|
| in | mm | | | | |
| 4.5" | 100-127 | FC 45 - L - LC | S3035397 | 3.1 | 6.83 |
| 5.5" | 125-148 | FC 55 - L - LC | S3035396 | 3.4 | 7.49 |

GASKETS

GUARNIZIONI

METRIC SYSTEM "M"

SISTEMA METRICO "M"

Oil resistant rubber gasket GU type
Guarnizione in gomma antiolio modello GU



| D.N. | | MODEL - Tipo | PART NUMBER - Codice | kg | lbs |
|------|-----|--------------|----------------------|-------|-------|
| in | mm | | | | |
| 3.5" | 80 | GU 34 | K000908582 | 0.080 | 0.176 |
| 4" | 100 | GU 40 | K000200312 | 0.105 | 0.231 |
| 4.5" | 100 | GU 45 | K2032322 | 0.120 | 0.264 |
| 5" | 125 | GU 50 | S2033711 | 0.140 | 0.308 |
| 5.5" | 125 | GU 55 | K2032324 | 0.170 | 0.375 |
| 6" | 150 | GU 60 | K000052541 | 0.170 | 0.375 |
| 6.5" | 150 | GU 65 | K000214435 | 0.208 | 0.458 |
| 7" | 180 | GU 70 | K000202462 | 0.208 | 0.458 |
| 7.5" | 180 | GU 75 | S3016347 | 0.250 | 0.551 |

GASKETS

GUARNIZIONI

METRIC SYSTEM "M"

SISTEMA METRICO "M"

Oil resistant rubber gasket GUR type
Guarnizione in gomma antiolio modello GUR



| D.N. | | MODEL - Tipo | PART NUMBER - Codice | kg | lbs |
|------|-----|--------------|----------------------|-------|-------|
| in | mm | | | | |
| 4.5" | 100 | GUR 45 | K2033281 | 0.140 | 0.309 |
| 5.5" | 125 | GUR 55 | K2033282 | 0.200 | 0.441 |

Oil resistant rubber gasket reinforced type for the articulations GUV type
Guarnizione in gomma di tipo rinforzato, indicato per le articolazioni modello GUV



| D.N. | | MODEL - Tipo | PART NUMBER - Codice | kg | lbs |
|------|-----|--------------|----------------------|-------|-------|
| in | mm | | | | |
| 4.5" | 100 | GUV 45 | K2032325 | 0.140 | 0.309 |
| 5.5" | 125 | GUV 55 | K2032326 | 0.200 | 0.441 |

Oil resistant rubber gasket three lipped GUT type
Guarnizione in gomma antiolio a tre labbri modello GUT



| D.N. | | MODEL - Tipo | PART NUMBER - Codice | kg | lbs |
|------|-----|--------------|----------------------|-------|-------|
| in | mm | | | | |
| 4.5" | 100 | GUT 45 | K2029124 | 0.162 | 0.357 |
| 5.5" | 125 | GUT 55 | K1032009 | 0.196 | 0.432 |

COLLARS

COLLARINI

METRIC SYSTEM "M"

SISTEMA METRICO "M"

Single Layer Collar
Collarino standard



| D.N. | | MODEL - Tipo | PART NUMBER - Codice | kg | lbs |
|-------|---------|--------------|----------------------|------|------|
| in | mm | | | | |
| 3.25" | 75/97 | COLL SC34 | S000225358 | 0.67 | 1.47 |
| 4" | 100/115 | COLL SC40 | S2001034 | 0.85 | 1.87 |
| 4.5" | 100/127 | COLL SC45 | S000215974 | 0.96 | 2.11 |
| 5" | 125/142 | COLL SC50 | S2001033 | 0.94 | 2.07 |
| 5.5" | 125/148 | COLL SC55 | S000215251 | 1.04 | 2.29 |
| 6" | 150/169 | COLL SC60 | S000052471 | 1.27 | 2.79 |
| 6.5" | 150/178 | COLL SC65 | S000214115 | 1.55 | 3.41 |
| 7" | 175/200 | COLL SC70 | S000214994 | 1.35 | 2.97 |

COUPLINGS

GIUNTI

HEAVY DUTY SYSTEM "HD"

SISTEMA HEAVY DUTY "HD"

Adjustable snap coupling - lever
Giunto regolabile a leva

DESCRIPTION | DESCRIZIONE

Drop forged steel couplings suitable for standard application

Giunto in acciaio stampato a caldo utilizzabile per applicazioni standard

WORKING PRESSURE:

110 bar - according to ISO EN 12001: 2012

PRESSIONE DI LAVORO:

110 bar - secondo ISO EN 12001: 2012

HD



| D.N. | | MODEL - Tipo | PART NUMBER - Codice | kg | lbs |
|------|-----|--------------|----------------------|------|-------|
| in | mm | | | | |
| 4" | 100 | AC 40 HD | S2040699 | 4.90 | 10.80 |
| 5" | 125 | AC 50 HD | S3005653 | 5.45 | 12.01 |
| 6" | 150 | AC 60 HD | S3012229 | 6.40 | 14.10 |

All couplings can be galvanized / *Tutti i giunti possono essere zincati*

COUPLINGS

GIUNTI

HEAVY DUTY SYSTEM "HD"

SISTEMA HEAVY DUTY "HD"

Adjustable one bolt coupling / *Giunto regolabile a un bullone*

DESCRIPTION | DESCRIZIONE

Drop forged steel couplings suitable for standard application
Giunto in acciaio stampato a caldo utilizzabile per applicazioni standard

WORKING PRESSURE: 110 bar - according to ISO EN 12001: 2012
PRESSIONE DI LAVORO: 110 bar - secondo ISO EN 12001: 2012

HD


| D.N. | | MODEL - Tipo | PART NUMBER - Codice | kg | lbs |
|------|-----|-----------------|----------------------|------|-------|
| in | mm | | | | |
| 4" | 100 | AC 40 HD 1 BOLT | S3034305 | 4.23 | 9.32 |
| 5" | 125 | AC 50 HD 1 BOLT | S3034306 | 4.85 | 10.69 |
| 6" | 150 | AC 60 HD 1 BOLT | S3007381 | 5.50 | 12.12 |

All couplings can be galvanized / *Tutti i giunti possono essere zincati*

Two bolts coupling / *Giunto a due bulloni*

DESCRIPTION | DESCRIZIONE

Drop forged steel couplings suitable for standard application
Giunto in acciaio stampato a caldo utilizzabile per applicazioni standard

WORKING PRESSURE: 110 bar - according to ISO EN 12001: 2012
PRESSIONE DI LAVORO: 110 bar - secondo ISO EN 12001: 2012

HD


| D.N. | | MODEL - Tipo | PART NUMBER - Codice | kg | lbs |
|------|-----|-----------------|----------------------|------|-------|
| in | mm | | | | |
| 5" | 125 | BC 50 HD 2 BOLT | S3008992 | 5.12 | 11.29 |

All couplings can be galvanized / *Tutti i giunti possono essere zincati*

COUPLINGS

GIUNTI

HEAVY DUTY SYSTEM "HD"

SISTEMA HEAVY DUTY "HD"

Non-adjustable snap coupling - short lever

Giunto fisso - leva corta

DESCRIPTION | DESCRIZIONE

Drop forged steel couplings suitable for standard application

Giunto in acciaio stampato a caldo utilizzabile per applicazioni standard

WORKING PRESSURE:

110 bar - according to ISO EN 12001: 2012

PRESSIONE DI LAVORO:

110 bar - secondo ISO EN 12001: 2012

HD



| D.N. | | MODEL - Tipo | PART NUMBER - Codice | kg | lbs |
|------|-----|---------------|----------------------|------|-------|
| in | mm | | | | |
| 1.5" | 38 | FC 15 HD - LC | S3009045 | 1.05 | 2.32 |
| 2" | 50 | FC 20 HD - LC | S3008973 | 1.50 | 3.31 |
| 2.5" | 65 | FC 25 HD - LC | S2040697 | 2.02 | 4.45 |
| 3" | 75 | FC 30 HD - LC | S2032857 | 2.12 | 4.67 |
| 4" | 100 | FC 40 HD - LC | S2032860 | 4.41 | 9.72 |
| 5" | 125 | FC 50 HD - LC | S2031992 | 4.90 | 10.80 |

All couplings can be galvanized / *Tutti i giunti possono essere zincati*

COUPLINGS

GIUNTI

HEAVY DUTY SYSTEM "HD"

SISTEMA HEAVY DUTY "HD"

Non-adjustable snap coupling - high lever

Giunto fisso - leva alta

DESCRIPTION | DESCRIZIONE

Drop forged steel couplings suitable for standard application

Giunto in acciaio stampato a caldo utilizzabile per applicazioni standard

WORKING PRESSURE:

110 bar - according to ISO EN 12001: 2012

PRESSIONE DI LAVORO:

110 bar - secondo ISO EN 12001: 2012

HD



| D.N. | | MODEL - Tipo | PART NUMBER - Codice | kg | lbs |
|------|-----|---------------|----------------------|------|-------|
| in | mm | | | | |
| 1.5" | 38 | FC 15 HD - LA | S3015720 | 1.70 | 3.75 |
| 2" | 50 | FC 20 HD - LA | S2032856 | 1.90 | 4.19 |
| 2.5" | 65 | FC 25 HD - LA | S3005577 | 2.05 | 4.52 |
| 3" | 75 | FC 30 HD - LA | S3005628 | 2.15 | 4.74 |
| 4" | 100 | FC 40 HD - LA | S3009053 | 4.45 | 9.81 |
| 5" | 125 | FC 50 HD - LA | S3005635 | 4.95 | 10.91 |

All couplings can be galvanized / *Tutti i giunti possono essere zincati*

GASKETS

GUARNIZIONI

HEAVY DUTY SYSTEM "HD"

SISTEMA HEAVY DUTY "HD"

Oil resistant rubber gasket GV type
Guarnizione in gomma anti-olio modello GV

HD



| D.N. | | MODEL - Tipo | PART NUMBER - Codice | kg | lbs |
|------|-----|--------------|----------------------|-------|-------|
| in | mm | | | | |
| 1.5" | 38 | GV 15 HD | S3017355 | 0.030 | 0.070 |
| 2" | 50 | GV 20 HD | K2029126 | 0.046 | 0.101 |
| 2.5" | 65 | GV 25 HD | K3003691 | 0.062 | 0.136 |
| 3" | 75 | GV 30 HD | K2029127 | 0.080 | 0.176 |
| 4" | 100 | GV 40 HD | K2030258 | 0.110 | 0.242 |
| 5" | 125 | GV 50 HD | K2029128 | 0.147 | 0.324 |
| 6" | 150 | GV 60 HD | K3004034 | 0.150 | 0.330 |
| 7" | 180 | GV 70 HD | K3012323 | 0.250 | 0.551 |

Other sizes upon request / *Altre misure a richiesta*

COLLARS

COLLARINI

HEAVY DUTY SYSTEM "HD"

SISTEMA HEAVY DUTY "HD"

Single Layer Collar
Collarino standard

HD



| D.N. | | MODEL - Tipo | PART NUMBER - Codice | kg | lbs |
|------|-----|--------------|----------------------|------|------|
| in | mm | | | | |
| 1.5" | 38 | COLL 15 HD | S3005887 | 0.23 | 0.51 |
| 2" | 50 | COLL 20 HD | S3005888 | 0.58 | 1.28 |
| 2.5" | 65 | COLL 25 HD | S3005889 | 0.71 | 1.56 |
| 3" | 75 | COLL 30 HD | S3005890 | 0.96 | 2.11 |
| 4" | 100 | COLL 40 HD | S3005891 | 1.19 | 2.62 |
| 5" | 125 | COLL 50 HD | S3005893 | 1.50 | 3.30 |
| 6" | 150 | COLL 60 HD | S2019477 | 1.80 | 3.97 |
| 7" | 180 | COLL 70 HD | S3012004 | 2.00 | 4.41 |

Other sizes upon request / Altre misure a richiesta

COUPLINGS

GIUNTI

OR SYSTEM "S"

SISTEMA OR "S"

Non-adjustable snap coupling - high lever / *Giunto fisso - leva alta*

DESCRIPTION | DESCRIZIONE

Drop forged steel couplings suitable for standard application

Giunto in acciaio stampato a caldo utilizzabile per applicazioni standard

WORKING PRESSURE: 110 bar - according to ISO EN 12001: 2012

PRESSIONE DI LAVORO: 110 bar - secondo ISO EN 12001: 2012



S

| D.N. | | MODEL - Tipo | PART NUMBER - Codice | kg | lbs |
|------|-----|--------------|----------------------|------|-------|
| in | mm | | | | |
| 4" | 100 | FC 40 SW | K2034504 | 4.75 | 10.47 |
| 5" | 125 | FC 50 SW | K2034506 | 5.95 | 13.12 |
| 6" | 150 | FC 60 SW | S2040583 | 7.70 | 16.97 |

Wedge coupling / *Giunto con cuneo*

DESCRIPTION | DESCRIZIONE

Drop forged steel couplings suitable for standard application

Giunto in acciaio stampato a caldo utilizzabile per applicazioni standard

WORKING PRESSURE: 110 bar - according to ISO EN 12001: 2012

PRESSIONE DI LAVORO: 110 bar - secondo ISO EN 12001: 2012



S

| D.N. | | MODEL - Tipo | PART NUMBER - Codice | kg | lbs |
|------|-----|----------------|----------------------|------|-------|
| in | mm | | | | |
| 5" | 125 | AC 50 SW WEDGE | S2033579 | 6.50 | 14.33 |
| 6" | 150 | AC 60 SW WEDGE | S3009065 | 7.90 | 17.41 |

All couplings can be galvanized / *Tutti i giunti possono essere zincati*

GASKETS

GUARNIZIONI

OR SYSTEM "S"

SISTEMA OR "S"

Oil resistant rubber gasket OR type
Guarnizione in gomma antiolio modello OR

S



| D.N. | | PART NUMBER - Codice | kg | lbs |
|------|-----|----------------------|-------|-------|
| in | mm | | | |
| 4" | 100 | OR 40 SW | 0.100 | 0.220 |
| 5" | 125 | OR 50 SW | 0.084 | 0.185 |
| 6" | 150 | OR 60 SW | 0.092 | 0.203 |

COLLARS

COLLARINI

OR SYSTEM "S"

SISTEMA OR "S"

Single Layer Male-female weld-on collar ATL
Collarino maschio/femmina a una parete da saldare



| D.N. | | MODEL - Tipo | PART NUMBER - Codice | kg | lbs |
|------|-----|--------------|----------------------|------|------|
| in | mm | | | | |
| 4" | 100 | COLL SM40 | S2019909 | 1.40 | 3.08 |
| 4" | 100 | COLL SF40 | S2019911 | 1.10 | 2.42 |
| 5" | 125 | COLL SM50 | S2011028 | 1.26 | 2.77 |
| 5" | 125 | COLL SF50 | S2011027 | 0.74 | 1.63 |

Single Layer Male-female weld-on collar ATL P
Collarino maschio/femmina a una parete da saldare



| D.N. | | TIPO - Type | CODICE - Code No. | kg | lbs |
|------|-----|-------------|-------------------|------|------|
| in | mm | | | | |
| 4" | 100 | COLL SM40 | S3008769 | 1.40 | 3.08 |
| 4" | 100 | COLL SF40 | S3005902 | 1.20 | 2.64 |
| 5" | 125 | COLL SM50 | S2040002 | 1.60 | 3.52 |
| 5" | 125 | COLL SF50 | S2040000 | 1.30 | 2.86 |
| 6" | 150 | COLL SM60 | S2037678 | 3.60 | 7.93 |
| 6" | 150 | COLL SF60 | S2024404 | 3.00 | 6.61 |

COUPLINGS

GIUNTI

OR SYSTEM "Z"

SISTEMA OR "Z"

Adjustable snap coupling - lever
Giunto regolabile a leva

DESCRIPTION | DESCRIZIONE

Drop forged steel couplings suitable for high pressure application

Giunto in acciaio stampato a caldo utilizzabile per applicazioni ad alta pressione

WORKING PRESSURE:

130 bar - according to ISO EN 12001: 2012

PRESSIONE DI LAVORO:

130 bar - secondo ISO EN 12001: 2012



| D.N. | | MODEL - Tipo | PART NUMBER - Codice | kg | lbs |
|------|-----|--------------|----------------------|------|-------|
| in | mm | | | | |
| 3" | 75 | AC 30 Z | S3009029 | 2.92 | 6.44 |
| 4" | 100 | AC 40 Z | S3005659 | 4.90 | 10.80 |
| 5" | 125 | AC 50 Z | S2022811 | 5.45 | 12.01 |
| 6" | 150 | AC 60 Z | S2022812 | 6.40 | 14.10 |
| 7" | 180 | AC 70 Z | S2022813 | 7.40 | 16.31 |

All couplings can be galvanized / *Tutti i giunti possono essere zincati*

COUPLINGS

GIUNTI

OR SYSTEM "Z"

SISTEMA OR "Z"

Adjustable one bolt coupling / *Giunto regolabile a un bullone*

DESCRIPTION | DESCRIZIONE

Drop forged steel couplings suitable for high pressure application

Giunto in acciaio stampato a caldo utilizzabile per applicazioni ad alta pressione

WORKING PRESSURE: 130 bar - according to ISO EN 12001: 2012

PRESSIONE DI LAVORO: 130 bar - secondo ISO EN 12001: 2012



| D.N. | | MODEL - Tipo | PART NUMBER - Codice | kg | lbs |
|------|-----|----------------|----------------------|------|-------|
| in | mm | | | | |
| 4" | 100 | AC 40 Z 1 BOLT | S3008995 | 4.23 | 9.32 |
| 6" | 150 | AC 60 Z 1 BOLT | S3012245 | 5.50 | 12.12 |

All couplings can be galvanized / *Tutti i giunti possono essere zincati*

COUPLINGS

GIUNTI

OR SYSTEM "Z"

SISTEMA OR "Z"

Two bolts coupling / *Giunto a due bulloni*

DESCRIPTION | DESCRIZIONE

Drop forged steel couplings suitable for high pressure application
Giunto in acciaio stampato a caldo utilizzabile per applicazioni ad alta pressione

WORKING PRESSURE: 130 bar - according to ISO EN 12001: 2012
PRESSIONE DI LAVORO: 130 bar - secondo ISO EN 12001: 2012



Z

| D.N. | | MODEL - Tipo | PART NUMBER - Codice | kg | lbs |
|------|-----|----------------|----------------------|------|-------|
| in | mm | | | | |
| 4" | 100 | BC 40 Z 2 BOLT | S2022810 | 4.90 | 10.20 |
| 5" | 125 | BC 50 Z 2 BOLT | S2011871 | 5.65 | 12.46 |

All couplings can be galvanized / *Tutti i giunti possono essere zincati*

Wedge coupling / *Giunto con cuneo*

DESCRIPTION | DESCRIZIONE

Drop forged steel couplings suitable for high pressure application
Giunto in acciaio stampato a caldo utilizzabile per applicazioni ad alta pressione

WORKING PRESSURE: 130 bar - according to ISO EN 12001: 2012
PRESSIONE DI LAVORO: 130 bar - secondo ISO EN 12001: 2012



Z

| D.N. | | MODEL - Tipo | PART NUMBER - Codice | kg | lbs |
|------|-----|--------------|----------------------|------|-------|
| in | mm | | | | |
| 5" | 125 | ACK 50 Z | S2040562 | 5.90 | 13 |
| 6" | 150 | ACK 60 Z | S2038086 | 6.10 | 13.45 |
| 7" | 180 | ACK 70 Z | S2040877 | 6.90 | 15.21 |

All couplings can be galvanized / *Tutti i giunti possono essere zincati*

GASKETS

GUARNIZIONI

OR SYSTEM "Z"

SISTEMA OR "Z"

Oil resistant rubber gasket OR-Z type
Guarnizione in gomma antiolio modello OR-Z



| D.N. | | MODEL - Tipo | PART NUMBER - Codice | kg | lbs |
|------|-----|--------------|----------------------|-------|-------|
| in | mm | | | | |
| 2" | 50 | OR 20 Z | K3012328 | 0.010 | 0.022 |
| 2.5" | 65 | OR 25 Z | K3012329 | 0.012 | 0.026 |
| 3" | 75 | OR 30 Z | K3009201 | 0.014 | 0.031 |
| 4" | 100 | OR 40 Z | K2032320 | 0.024 | 0.053 |
| 5" | 125 | OR 50 Z | K000907859 | 0.027 | 0.059 |
| 6" | 150 | OR 60 Z | K000907855 | 0.026 | 0.057 |
| 7" | 180 | OR 70 Z | K000907857 | 0.039 | 0.086 |

COLLARS

COLLARINI

OR SYSTEM "Z"

SISTEMA OR "Z"

Single Layer Collar
Collarino standard



| D.N. | | MODEL - Tipo | PART NUMBER - Codice | kg | lbs |
|------|---------|--------------|----------------------|-----|------|
| in | mm | | | | |
| 4" | 100/146 | COLL FZ40 | S2001023 | 1.2 | 2.64 |
| 5" | 125/168 | COLL FZ50 | S000223076 | 1.8 | 3.96 |
| 6" | 150/199 | COLL FZ60 | S000223074 | 2.2 | 4.85 |
| 7" | 180/227 | COLL FZ70 | S000223072 | 2.7 | 5.95 |
| 4" | 100/146 | COLL MZ40 | S2001024 | 1.2 | 2.64 |
| 5" | 125/168 | COLL MZ50 | S000223077 | 1.9 | 4.18 |
| 6" | 150/199 | COLL MZ60 | S000223075 | 2.1 | 4.62 |
| 7" | 180/227 | COLL MZ70 | S000223071 | 2.7 | 5.95 |
| 4" | 100/146 | COLL FP40 | S2019039 | 1.5 | 3.30 |
| 5" | 125/168 | COLL FP50 | S000234395 | 1.9 | 4.18 |
| 6" | 150/199 | COLL FP60 | S1015711.01 | 3.2 | 7.05 |
| 4" | 100/146 | COLL MP40 | S2022758 | 1.5 | 3.30 |
| 5" | 125/168 | COLL MP50 | S000234396 | 2 | 4.40 |
| 6" | 150/199 | COLL MP60 | S1015708.03 | 3.5 | 7.71 |

COUPLINGS

GIUNTI

OR SYSTEM "ZX"

SISTEMA OR "ZX"

Two bolts coupling / *Giunto a due bulloni*

DESCRIPTION | DESCRIZIONE

Drop forged steel couplings suitable for high pressure application
Giunto in acciaio stampato a caldo utilizzabile per applicazioni ad alta pressione

WORKING PRESSURE: 130 bar - according to ISO EN 12001: 2012
PRESSIONE DI LAVORO: 130 bar - secondo ISO EN 12001: 2012



| D.N. | | MODEL - Tipo | PART NUMBER - Codice | kg | lbs |
|------|-----|--------------|----------------------|------|-------|
| in | mm | | | | |
| 5" | 125 | BC 50 ZX | S2022770 | 5.65 | 12.46 |

All couplings can be galvanized / *Tutti i giunti possono essere zincati*

One bolt coupling / *Giunto regolabile a un bullone*

DESCRIPTION | DESCRIZIONE

Drop forged steel couplings suitable for high pressure application
Giunto in acciaio stampato a caldo utilizzabile per applicazioni ad alta pressione

WORKING PRESSURE: 130 bar - according to ISO EN 12001: 2012
PRESSIONE DI LAVORO: 130 bar - secondo ISO EN 12001: 2012



| D.N. | | MODEL - Tipo | PART NUMBER - Codice | kg | lbs |
|------|-----|--------------|----------------------|------|-------|
| in | mm | | | | |
| 5" | 125 | ACM 50 ZP | S3005554 | 5.25 | 11.57 |

All couplings can be galvanized / *Tutti i giunti possono essere zincati*

COLLARS

COLLARINI

OR SYSTEM "ZX"

SISTEMA OR "ZX"

Oil resistant rubber gasket OR-ZX type
Guarnizione in gomma antiolio modello OR-ZX

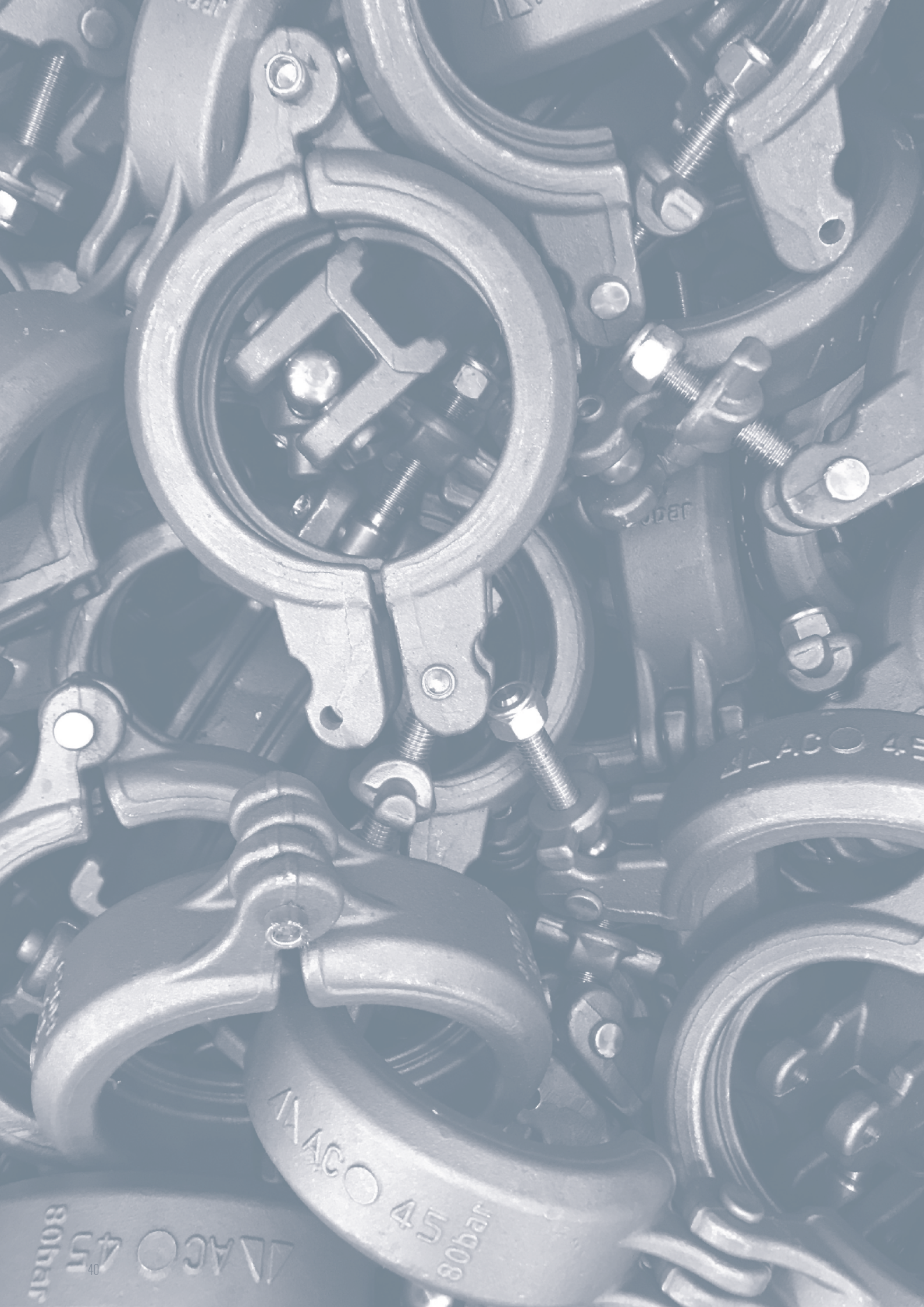


| D.N. | | MODEL - Tipo | PART NUMBER - Codice | kg | lbs |
|------|-----|--------------|----------------------|-------|-------|
| in | mm | | | | |
| 5" | 125 | OR 50 ZX | S2040878 | 0.016 | 0.035 |

Single Layer Male-Female collar
Collarino maschio/femmina a una parete



| D.N. | | MODEL - Tipo | PART NUMBER - Codice | kg | lbs |
|------|---------|--------------|----------------------|------|------|
| in | mm | | | | |
| 5" | 125/177 | COLL 50 ZX M | S2037830 | 2.4 | 5.29 |
| 5" | 125/177 | COLL 50 ZX F | S2037826 | 2.75 | 6.06 |



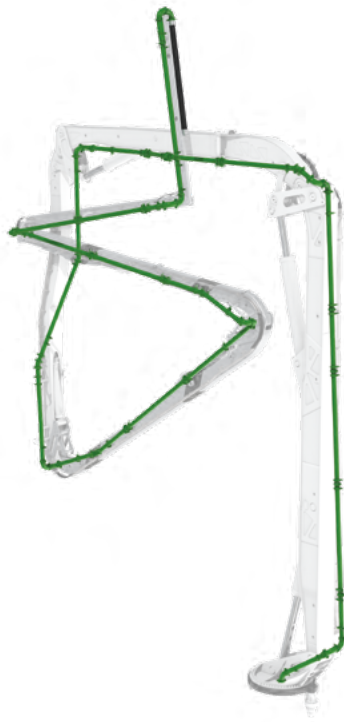
WACO 45
80bar

WACO 45
80bar

WACO 45

WACO

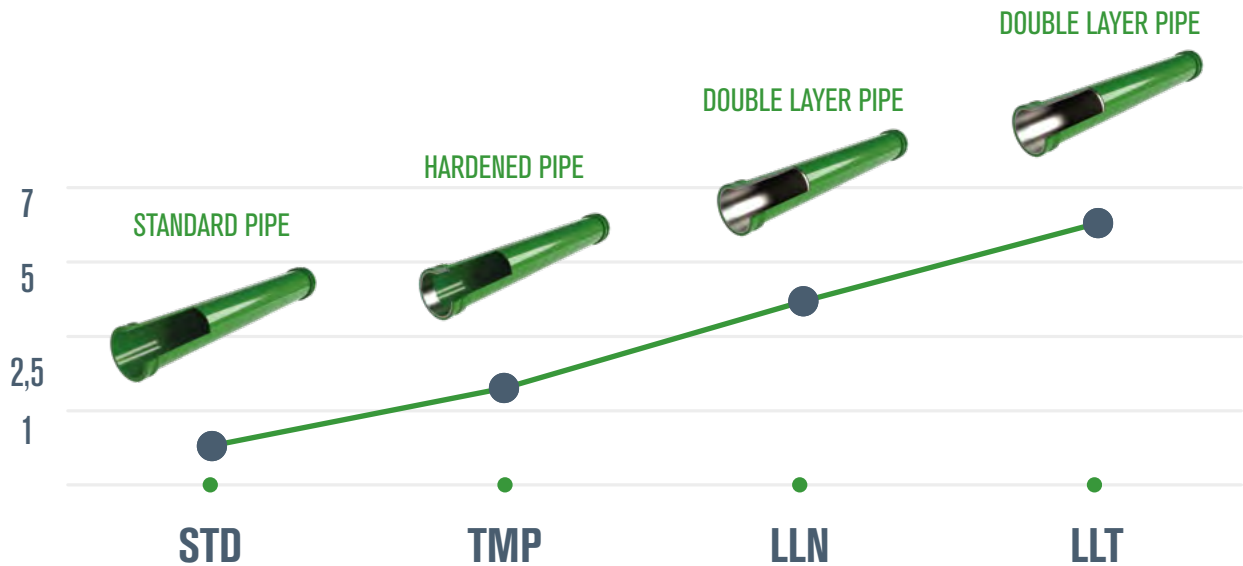
PIPE SYSTEMS



PIPE SYSTEMS

PIPE SYSTEMS

EXPECTED PIPE LIFETIME



Compared with commonly available standard pipes.
Strongly related to concrete type, pumping conditions and maintenance.

PIPE MAINTENANCE

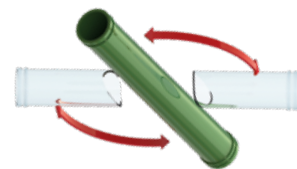
RECOMMENDED INSPECTION INTERVALS

To increase the service life of the pipes and elbows, we suggest:

AFTER 15-20% OF PIPE ESTIMATED WEAR LIFE: ROTATE IT ON HIS AXIS OF ABOUT 120"
AFTER 30-35% OF PIPE ESTIMATED WEAR LIFE: ROTATE IT ON HIS AXIS OF ABOUT 120"



AFTER 50% OF ESTIMATED WEAR LIFE: INVERT THE PIPE IN CONCRETE FLOW DIRECTION



AFTER 50% OF ESTIMATED WEAR LIFE: INVERT THE ELBOWS IN CONCRETE FLOW DIRECTION



20

SINGLE LAYER PIPE SYSTEMS



PIPES TUBI

STANDARD PIPE SISTEMA STANDARD

STD Standard steel pipes for concrete

Tubi in acciaio per calcestruzzo

Single Layer welded steel pipe S355

Tubo in acciaio saldato S355 a singola parete

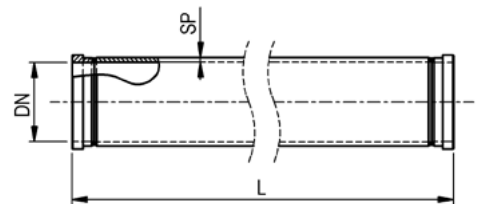
EXAMPLE | ESEMPIO

To indicate:

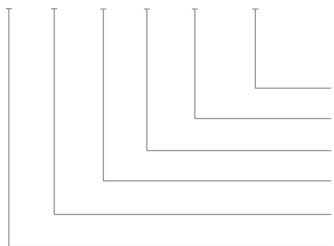
**STANDARD PIPE DN125 - 5" - 4 mm wall thickness,
3 meter lenght - 5,5" SC55 weld on collars-quality
E355 - St.52.3**

Per indicare:

*TUBO STANDARD DN125 - 5" - spessore 4 mm, lunghezza 3 metri,
collarini 5,5" SC55 - qualità E355 - St.52.3*



PIPE STD SP4 125 SC55 L3000



PART IDENTIFICATION SYSTEM

Sistema di codifica

L3000 = Length

SC55 = Connecting system code / Collar size 5,5"

125 = 5" - 125 mm = DN - Nominal diameter

SP4 = Wall thickness

STD - Pipe SJ355

Pipe = Pipe type

Tab.1

| Connecting system/Sistema di collegamento | | |
|---|--|---|
| SC G | | "GU" System - Grooved Sistema "GU" - Mis. in pollici |
| SC M | | "GU" System - Metric Sistema "GU" - Mis. metriche |
| HD | | "GU" System - Raised Sistema "GU" - Mis. speciali |
| SW | | "OR" System - Male-Fem. Std. Sistema "OR" - M + F std. |
| Z - ZX | | "OR" System - M + F conic Sistema "OR" - M + F conico |

Tab.2

| Weld-on collar sizes/Dimensioni collarini | |
|---|----------------|
| 20 | 2" - 50/60.3 |
| 25 | 2,5" - 65/73 |
| 30 | 3" - 75/88.9 |
| 34 | 3" - 80/97 |
| 40 | 4" - 100/114 |
| 44 | 4,4" - 112/148 |
| 45 | 4,5" - 100/127 |
| 47 | 5" - 120/142 |
| 50 | 5" - 125/141.3 |
| 55 | 5,5" - 125/148 |
| 60 | 6" - 150/168.3 |
| 65 | 6,5" - 150/178 |
| 70 | 7" - 180/200 |
| 75 | 7,5" - 180/209 |

ELBOWS CURVE

STANDARD ELBOW CURVE STANDARD

STD Steel elbows for concrete

Curve in acciaio per calcestruzzo

Single Layer P355 steel elbow

Curva singola parete in acciaio P355

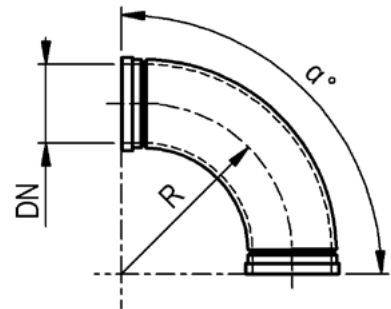
EXAMPLE | ESEMPIO

To indicate:

**STANDARD ELBOW DN125 - 5" - 7 mm wall thickness,
R275 - 5,5" SC55 weld on collars - quality E355 - St. 52.3**

Per indicare:

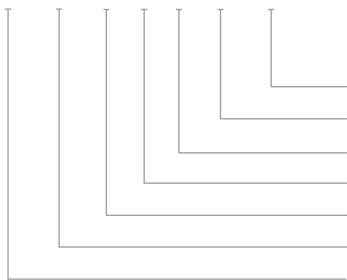
**CURVA STANDARD DN125 - 5" - spessore 7 mm,
R275 - 5,5" collarini SC55 - qualità E355 - St. 52.3**



Elbow STD 125 SC 55 90G R275

PART IDENTIFICATION SYSTEM

Sistema di codifica



*R275 = Radius of elbow
90 = Degree of elbow
55 = Connection diameter
SC = Connection type
125 = Internal diameter
Std = Material quality
Elbow = Elbow type*

Tab.1

| Connecting system/Sistema di collegamento | | |
|---|--|---|
| SC G | | "GU" System - Grooved Sistema "GU" - Mis. in pollici |
| SC M | | "GU" System - Metric Sistema "GU" - Mis. metriche |
| HD | | Sistema "HEAVY DUTY" |
| SW | | "OR" System - Male-Fem. Std. Sistema "OR" - M + F std. |
| Z - ZK | | "OR" System - M + F conic Sistema "OR" - M + F conico |

Tab.2

| Weld-on collar sizes/Dimensioni collari | |
|---|----------------|
| 20 | 2" - 50 |
| 25 | 2.5" - 65 |
| 30 | 3" - 75 |
| 34 | 3.25" - 80/97 |
| 40 | 4" - 100 |
| 44 | 4.4" - 112/148 |
| 45 | 4.5" - 100/127 |
| 50 | 5" - 125 |
| 55 | 5.5" - 125/148 |
| 60 | 6" - 150 |
| 65 | 6.5" - 150/178 |
| 70 | 7" - 180 |
| 75 | 7.5" - 180/209 |
| 80 | 8" - 200 |

ELBOWS CURVE

MANGANESE ELBOW CURVE IN MANGANESE

MN Manganese Elbows for concrete

Curve in manganese per calcestruzzo

Single Layer manganese casted elbow

Curva singola parete al manganese in fusione

EXAMPLE | ESEMPIO

To indicate:

MN ELBOW DN125 5", R275

5,5" SC55 weld on collars - quality Mn steel

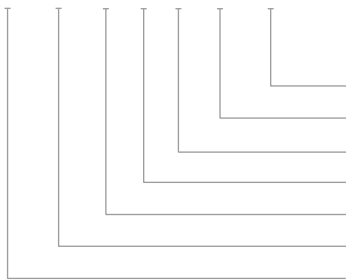
Per indicare:

CURVA in acciaio Mn DN125 5" R275

5,5" collarini SC55 - qualità acciaio Mn



Elbow MN 125 SC 55 90G R275



PART IDENTIFICATION SYSTEM

Sistema di codifica

R275 = Radius of elbow

90 = Degree of elbow

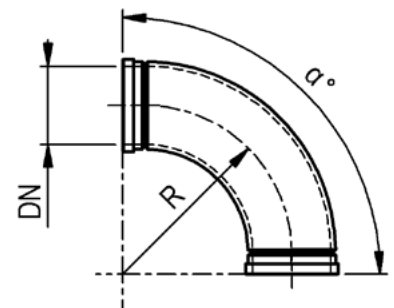
55 = Connection diameter

SC = Connection type

125 = Internal diameter

MN = Material quality

Elbow = Elbow type



| Tab.1 | | |
|---|--|---|
| Connecting system/Sistema di collegamento | | |
| SC G | | "GU" System - Grooved Sistema "GU" - Mis. in pollici |
| SC M | | "GU" System - Metric Sistema "GU" - Mis. metriche |
| HD | | Sistema "HEAVY DUTY" |
| SW | | "OR" System - Male-Fem. Std. Sistema "OR" - M + F std. |
| Z - ZX | | "OR" System - M + F conic Sistema "OR" - M + F conico |

| Tab.2 | |
|---|----------------|
| Weld-on collar sizes/Dimensioni collarini | |
| 30 | 3" - 75 |
| 34 | 3.25" - 80/97 |
| 40 | 4" - 100 |
| 44 | 4.4" - 112/148 |
| 45 | 4.5" - 100/127 |
| 50 | 5" - 125 |
| 55 | 5.5" - 125/148 |
| 60 | 6" - 150 |
| 65 | 6.5" - 150/178 |
| 70 | 7" - 180 |

ELBOWS

Curve

LONGLIFE ELBOW

CURVE LONGLIFE

LLN Longlife Elbows for concrete

Curve longlife per calcestruzzo

Single Layer alloy casted elbow with double layer chromium carbide flange

Curva singola parete in lega con collari doppia parete ai carburi di cromo

EXAMPLE | ESEMPIO

To indicate:

LLN ELBOW DN125 5", R275 - 5,5" SC55 weld on collars - quality casted body/ CCI flanges

Per indicare:

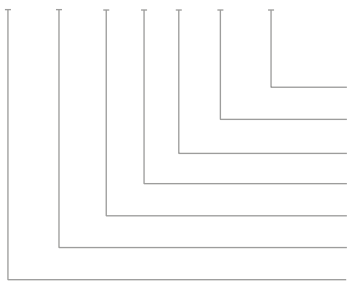
CURVA in acciaio Mn DN125 5", R275 - 5,5" collarini SC55 - qualità curva acciaio Mn/collari doppia parete



Elbow LLN 125 SC 55 90G R275

PART IDENTIFICATION SYSTEM

Sistema di codifica



R275 = Radius of elbow

90 = Degree of elbow

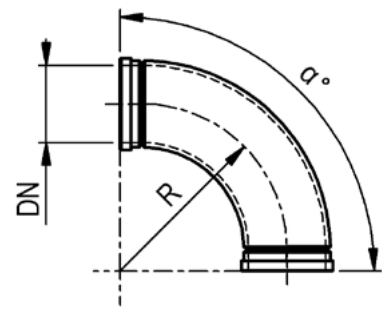
55 = Connection diameter

SC = Connection type

125 = Internal diameter

LLN = Material quality casted body flange cci

Elbow = Elbow type



| Tab.1 | | |
|---|--|---|
| Connecting system/Sistema di collegamento | | |
| SC G | | "GU" System - Grooved Sistema "GU" - Mis. in pollici |
| SC M | | "GU" System - Metric Sistema "GU" - Mis. metriche |
| HD | | Sistema "HEAVY DUTY" |
| SW | | "OR" System - Male-Fem. Std. Sistema "OR" - M + F std. |
| Z - ZX | | "OR" System - M + F conic Sistema "OR" - M + F conico |

| Tab.2 | |
|---|----------------|
| Weld-on collar sizes/Dimensioni collari | |
| 40 | 4" - 100 |
| 44 | 4,4" - 112/148 |
| 45 | 4,5" - 100/127 |
| 50 | 5" - 125 |
| 55 | 5,5" - 125/148 |
| 60 | 6" - 150 |
| 65 | 6,5" - 150/178 |
| 70 | 7" - 180 |

REDUCERS RIDUZIONI

STANDARD REDUCER RIDUZIONI STANDARD

STD Reducers for concrete

Riduzioni in acciaio per calcestruzzo

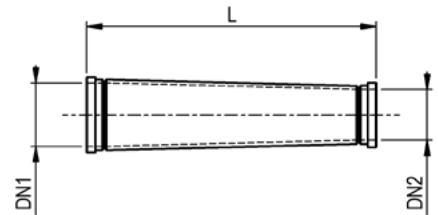
Single Layer seamless steel reducers

Riduzioni standard in acciaio non saldato

EXAMPLE | ESEMPIO

To indicate: STANDARD REDUCER DN125/100 5"/4" - 7 mm wall thickness, 1 meter length - 5,5" SC55/4,5" SC45 weld on collars - quality E355 - St.52.3

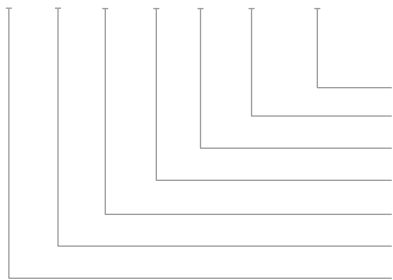
Per indicare: RIDUZIONE STANDARD DN125/100 5"/4" - spessore 7 mm, lunghezza 1 metro - collarini 5,5" SC55/4,5" SC45 - qualità E355 - St.52.3



REDU STD 125 SC55/100 SC45 L1000

PART IDENTIFICATION SYSTEM

Sistema di codifica



- L1000 = Length
- SC45 = Connection system (see Tab. 1)
- 100 = Diameter output
- SC55 = Collar size
- 125 = Diameter input
- STD = Quality single layer
- REDU = Reducer

(a) If not otherwise mentioned, wall thickness will be 7mm / *Se non viene indicata, si intende sp 7*

| Tab.1 | | |
|---|--|---|
| Connecting system/Sistema di collegamento | | |
| SC G | | "GU" System - Grooved Sistema "GU" - Mis. in pollici |
| SC M | | "GU" System - Metric Sistema "GU" - Mis. metriche |
| HD | | "GU" System - Raised Sistema "GU" - Mis. speciali |
| SW | | "OR" System - Male-Fem. Std. Sistema "OR" - M + F std. |
| Z - ZX | | "OR" System - M + F conic Sistema "OR" - M + F conico |

| Tab.2 | |
|---|----------------|
| Weld-on collar sizes/Dimensioni collarini | |
| 20 | 2" - 50 |
| 25 | 2,5" - 65 |
| 30 | 3" - 75 |
| 34 | 3" - 80/97 |
| 40 | 4" - 100 |
| 44 | 4,4" - 112/148 |
| 45 | 4,5" - 100/127 |
| 50 | 5" - 125 |
| 55 | 5,5" - 125/148 |
| 60 | 6" - 150 |
| 65 | 6,5" - 150/178 |
| 70 | 7" - 180 |
| 75 | 7,5" - 180/209 |
| 80 | 8" - 200 |

30

HARDENED PIPE SYSTEMS

30 HARDENED
PIPE SYSTEMS



PIPES TUBI

HARDENED PIPE TUBI IN ACCIAIO TEMPRATO

TMP Steel pipes for concrete

Tubi in acciaio temprato per calcestruzzo

Single Layer seamless steel pipe hardened

Tubo in acciaio non saldato temprato a singola parete

EXAMPLE | ESEMPIO

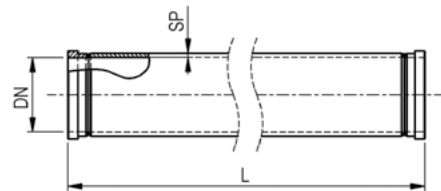
To indicate:

STEEL PIPE DN 125 - 5" - 4 mm wall thickness, 3 meter length - 5,5" - 125-148 mm weld-on collars, quality TMP

Per indicare:

TUBO IN ACCIAIO, DN 125 - 5" - spessore 4 mm

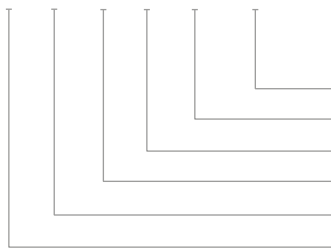
lunghezza 3 m, collari 5,5" - 125-148 mm, qualità TMP



PIPE TMP SP4 125 SC55 L3000

PART IDENTIFICATION SYSTEM

Sistema di codifica



L3000 = Length

SC55 = Connecting system code / Collar size

125 = 5" - 125 mm = DN - Nominal diameter

SP4 = Wall thickness

TMP - Pipe single layer hardened 55HRC

PIPE = Pipe type

| Tab.1 | | |
|---|--|---|
| Connecting system/Sistema di collegamento | | |
| SC G | | "GU" System - Grooved Sistema "GU" - Mis. in pollici |
| SC M | | "GU" System - Metric Sistema "GU" - Mis. metriche |
| HD | | "GU" System - Raised Sistema "GU" - Mis. speciali |
| SW | | "OR" System - Male-Fem. Std. Sistema "OR" - M + F std. |
| Z - ZX | | "OR" System - M + F conic Sistema "OR" - M + F conico |

| Tab.2 | |
|---|----------------|
| Weld-on collar sizes/Dimensioni collari | |
| 20 | 2" - 50/60.3 |
| 25 | 2,5" - 65/73 |
| 30 | 3" - 75/88.9 |
| 34 | 3" - 80/97 |
| 40 | 4" - 100/114 |
| 44 | 4.4" - 112/148 |
| 45 | 4,5" - 100/127 |
| 47 | 5" - 120/142 |
| 50 | 5" - 125/141.3 |
| 55 | 5,5" - 125/148 |
| 60 | 6" - 150/168.3 |
| 65 | 6,5" - 150/178 |

ELBOWS CURVE

HARDENED ELBOW CURVE IN ACCIAIO TEMPRATO

TMP Steel elbows for concrete

Curve in acciaio temprato per calcestruzzo

Single Layer P355 Steel elbow

Curva singola parete acciaio P355

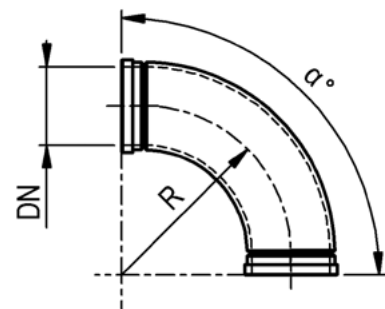
EXAMPLE | ESEMPIO

To indicate:

**TEMPERED BEND DN125 - 5" - 7 mm wall thickness,
R275 - 5,5" SC55 weld on collars - quality P355**

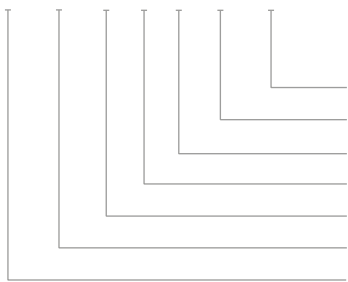
Per indicare:

**CURVA TEMPRATA DN125 - 5" - spessore 7 mm, R275 -
5,5" collarini SC55 - qualità P355**



Elbow TMP 125 SC 55 90G R275

PART IDENTIFICATION SYSTEM Sistema di codifica



R275 = Radius of elbow

90 = Degree of elbow

55 = Connection diameter

SC = Connection type

125 = Internal diameter

TMP = Material quality

Elbow = Elbow type

Tab.1

| Connecting system/Sistema di collegamento | | |
|---|--|---|
| SC G | | "GU" System - Grooved Sistema "GU" - Mis. in pollici |
| SC M | | "GU" System - Metric Sistema "GU" - Mis. metriche |
| HD | | "GU" System - Raised Sistema "GU" - Mis. speciali |
| SW | | "OR" System - Male-Fem. Std. Sistema "OR" - M + F std. |
| Z - ZX | | "OR" System - M + F conic Sistema "OR" - M + F conico |

Tab.2

| Weld-on collar sizes/Dimensioni collarini | |
|---|----------------|
| 20 | 2" - 50 |
| 25 | 2.5" - 65 |
| 30 | 3" - 75 |
| 34 | 3.25" - 80/97 |
| 40 | 4" - 100 |
| 44 | 4.4" - 112/148 |
| 45 | 4.5" - 100/127 |
| 50 | 5" - 125 |
| 55 | 5.5" - 125/148 |
| 60 | 6" - 150 |
| 65 | 6.5" - 150/178 |
| 70 | 7" - 180 |
| 75 | 7.5" - 180/209 |
| 80 | 8" - 200 |

REDUCERS RIDUZIONI

HARDENED REDUCER RIDUZIONI IN ACCIAIO TEMPRATO

Hardened reducers for concrete

Riduzioni in acciaio temprato per calcestruzzo

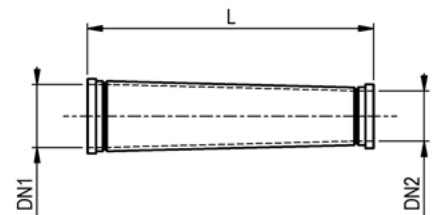
Single Layer seamless steel reducers

Riduzioni in acciaio non saldato a singola parete

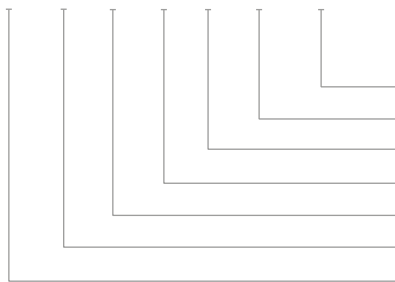
EXAMPLE | ESEMPIO

To indicate: HARDENED REDUCER DN125/100 5"/4" - 7 mm wall thickness, 1 meter lenght - 5,5" SC55/4,5" SC45 weld on collars - quality E355 - St.52.3

Per indicare: RIDUZIONE TEMPRATA DN125/100 5"/4" - spessore 7 mm, lunghezza 1 metro - collarini 5,5" SC55/4,5" SC45 - qualità E355 - St.52.3



REDU TMP 125 SC55/100 SC45 L1000



PART IDENTIFICATION SYSTEM

Sistema di codifica

L1000 = Length

SC45 = Connection system (see Tab. 1)

100 = Diameter output

SC55 = Collar size

125 = Diameter input

TMP = Single layer induction hardened 55HRC

REDU = Reducer

Tab.1

| Connecting system/Sistema di collegamento | | |
|---|--|---|
| SC G | | "GU" System - Grooved Sistema "GU" - Mis. in pollici |
| SC M | | "GU" System - Metric Sistema "GU" - Mis. metriche |
| HD | | "GU" System - Raised Sistema "GU" - Mis. speciali |
| SW | | "OR" System - Male-Fem. Std. Sistema "OR" - M + F std. |
| Z - ZX | | "OR" System - M + F conic Sistema "OR" - M + F conico |

Tab.2

| Weld-on collar sizes/Dimensioni collarini | |
|---|----------------|
| 20 | 2" - 50 |
| 25 | 2,5" - 65 |
| 30 | 3" - 75 |
| 34 | 3" - 80/97 |
| 40 | 4" - 100 |
| 44 | 4,4" - 112/148 |
| 45 | 4,5" - 100/127 |
| 50 | 5" - 125 |
| 55 | 5,5" - 125/148 |
| 60 | 6" - 150 |
| 65 | 6,5" - 150/178 |
| 70 | 7" - 180 |
| 75 | 7,5" - 180/209 |
| 80 | 8" - 200 |

40

DOUBLE LAYER PIPE SYSTEMS

40 DOUBLE LAYER
PIPE SYSTEMS



PIPES TUBI

DOUBLE LAYER PIPES TUBI DOPPIA PARETE

40 DOUBLE LAYER
PIPE SYSTEMS

Double layer boom pipes for concrete

Tubi in acciaio doppia parete per calcestruzzo

LLN - 2,6 mm inner layer 65 HRC - 1,8 mm external layer

LLN - 2,6 mm tubo interno 65 HRC - 1,8 mm tubo esterno

LLT - 3 mm inner layer 65 HRC - 1,8 mm external layer

LLT - 3 mm tubo interno 65 HRC - 1,8 mm tubo esterno

EXAMPLE | ESEMPIO

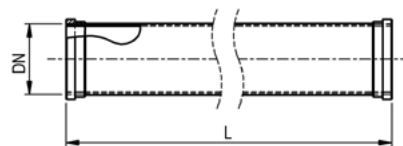
To indicate:

STEEL PIPE double layer 2.6 mm + 1.8 mm, - 5,5"

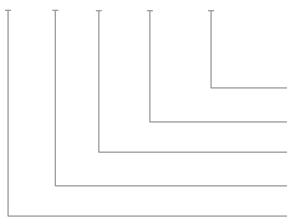
125-148 mm weld-on collars, quality LLN

Per indicare:

TUBO IN ACCIAIO doppia parete spessore 2.6 mm + 1.8 mm,
collari 5,5" - 125-148 mm, qualità LLN



PIPE LLN 125 SC55 L3000



PART IDENTIFICATION SYSTEM

Sistema di codifica

L3000 = Length


SC55 = Connecting system code / Collar size

125 = 5" - 125 mm = DN - Nominal diameter

LLN - w-t of pipes

PIPE = Pipe type

- Other sizes upon request / *Altre misure a richiesta*
- XL flange on demand / *Flangia direzionale su richiesta*

| Tab.1 | | |
|---|---|--|
| Connecting system/Sistema di collegamento | | |
| SC M |  | "GU" System - Metric Sistema "GU" - Mis. metriche |

| Tab.2 | |
|---|----------------|
| Weld-on collar sizes/Dimensioni collari | |
| 45 | 4,5" - 100/127 |
| 50 | 5" - 125/141.3 |
| 55 | 5,5" - 125/148 |

PIPES TUBI

DOUBLE LAYER PIPES TUBI DOPPIA PARETE

Double layer deck pipes for concrete

Tubi in acciaio doppia parete pesante per calcestruzzo

LLH - 5 mm inner layer 65 HRC - 3 mm external layer

LLH - 5 mm tubo interno 65 HRC - 3 mm tubo esterno

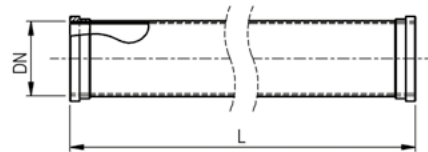
EXAMPLE | ESEMPIO

To indicate:

STEEL PIPE double layer 5 mm + 3 mm, - 5,5"
125-148 mm weld-on collars, quality LLH

Per indicare:

*TUBO IN ACCIAIO doppia parete spessore 5 mm + 3 mm,
collari 5,5" - 125-148 mm, qualità LLH*

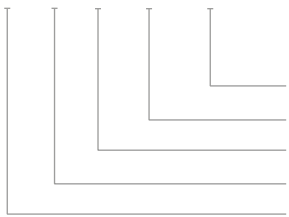


40 DOUBLE LAYER
PIPE SYSTEMS

PIPE LLH 125 SC55 L3000

PART IDENTIFICATION SYSTEM

Sistema di codifica



L3000 = Length

SC55 = Connecting system code / Collar size

125 = 5" - 125 mm = DN - Nominal diameter

LLH - w-t of pipes

PIPE = Pipe type

Tab.1

| Connecting system/Sistema di collegamento | | |
|---|--|--|
| SC M | | "GU" System - Metric Sistema "GU" - Mis. metriche |
| HD | | On demand |
| SW | | On demand |
| Z - ZX | | On demand |

Tab.2

| Weld-on collar sizes/Dimensioni collari | |
|---|----------------|
| 45 | 4,5" - 100/127 |
| 55 | 5,5" - 125/148 |

ELBOWS CURVE

DOUBLE LAYER ELBOW CURVA DOPPIA PARETE

40 DOUBLE LAYER
PIPE SYSTEMS

LLT Chromium carbide elbows for concrete - inner layer 7 mm
 Curve carburi di cromo per calcestruzzo - spessore interno 7 mm
 Double layer elbow with chromium carbide - inner layer 7 mm
 Curva doppia parete ai carburi di cromo - spessore interno 7 mm

EXAMPLE | ESEMPIO

To indicate:
 STEEL BEND double layer 7 mm + 3 mm, - 5,5"
 125-148 mm weld-on collars, quality LLT

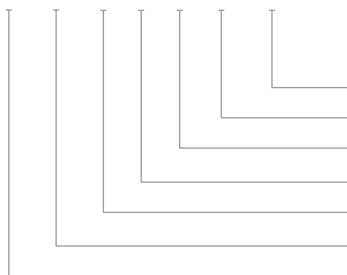
Per indicare:
 CURVA IN ACCIAIO doppia parete spessore 7 mm + 3 mm,
 collari 5,5" - 125-148 mm, qualità LLT



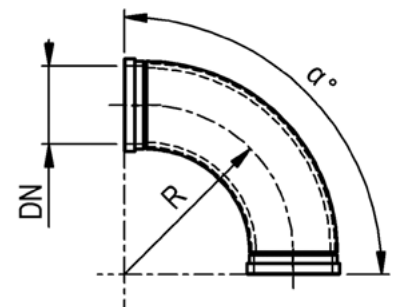
Elbow LLT 125 SC 55 90G R275

PART IDENTIFICATION SYSTEM

Sistema di codifica



R275 = Radius of elbow
 90 = Degree of elbow
 55 = Connection diameter
 SC = Connection type
 125 = Internal diameter
 LLT = 7 mm CCI inner layer + 3mm external E355 - flange CCI
 Elbow = Elbow type



| Tab.1 | | |
|---|--|---|
| Connecting system/Sistema di collegamento | | |
| SC M | | "GU" System - Metric Sistema "GU" - Mis. metriche |
| HD | | Sistema "HEAVY DUTY" |
| SW | | "OR" System - Male-Fem. std. Sistema "OR" - M + F std. |
| Z - ZX | | "OR" System - M + F conic Sistema "OR" - M + F conico |

| Tab.2 | |
|---|----------------|
| Weld-on collar sizes/Dimensioni collari | |
| 45 | 4.5" - 100/127 |
| 50 | 5" - 125 |
| 55 | 5.5" - 125/148 |
| 60 | 6" - 150 |
| 65 | 6.5" - 150/178 |

ELBOWS CURVE

DOUBLE LAYER ELBOW CURVA DOPPIA PARETE

LLH Chromium carbide elbows for concrete - inner layer 10 mm
 Curve carburi di cromo per calcestruzzo - spessore interno 10 mm
 Double layer elbow with chromium carbide - inner layer 10 mm
 Curva doppia parete ai carburi di cromo - spessore interno 10 mm

EXAMPLE | ESEMPIO

To indicate:
 STEEL BEND double layer 10 mm + 3 mm, - 5,5"
 125-148 mm weld-on collars, quality LLH

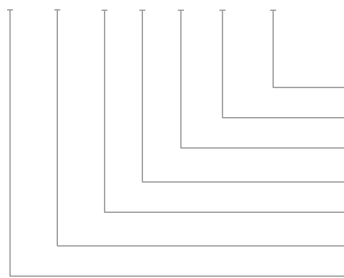
Per indicare:
 CURVA IN ACCIAIO doppia parete spessore 10 mm + 3 mm,
 collari 5,5" - 125-148 mm, qualità LLH



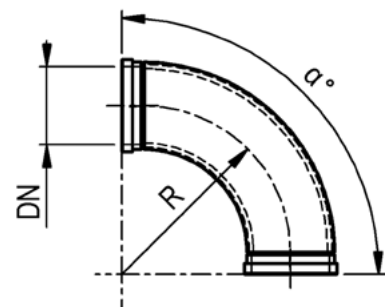
40 DOUBLE LAYER
PIPE SYSTEMS

Elbow LLH 125 SC 55 90G R275

PART IDENTIFICATION SYSTEM Sistema di codifica



- R275 = Radius of elbow
- 90 = Degree of elbow
- 55 = Connection diameter
- SC = Connection type
- 125 = Internal diameter
- LLH = 10 mm CCI inner layer + 3mm external E355 - flange CCI
- Elbow = Elbow type



| Tab.1 | | |
|---|--|---|
| Connecting system/Sistema di collegamento | | |
| SC M | | "GU" System - Metric Sistema "GU" - Mis. metriche |
| HD | | Sistema "HEAVY DUTY" |
| SW | | "OR" System - Male-Fem. std. Sistema "OR" - M + F std. |
| Z - ZX | | "OR" System - M + F conic Sistema "OR" - M + F conico |

| Tab.2 | |
|---|----------------|
| Weld-on collar sizes/Dimensioni collari | |
| 45 | 4.5" - 100/127 |
| 50 | 5" - 125 |
| 55 | 5.5" - 125/148 |
| 60 | 6" - 150 |
| 65 | 6.5" - 150/178 |
| 70 | 7" - 180 |
| 75 | 7.5" - 180/209 |

ELBOWS CURVE

DOUBLE LAYER ELBOW CURVA DOPPIA PARETE

LLH IMPACT ELBOWS (LLH 3+12)

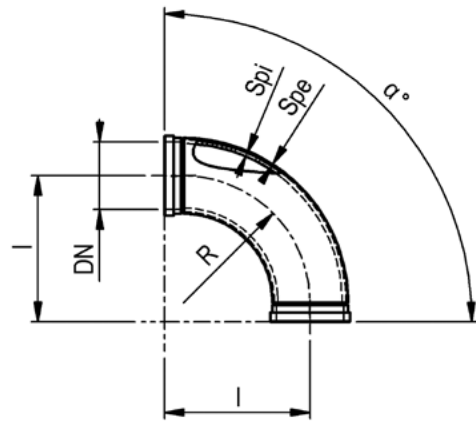
Curva Impact doppia parete ai carburi di cromo

Double layer elbow with chromium carbide insert.

Double layer collars with chromium carbide insert.

With the new compact technology there is zero gap between the two layers. Specifically designed to be mounted as impact elbow on the last section of distribution booms.

Curva doppia parete ai carburi di cromo. Flange doppia parete ai carburi di cromo. Con la nuova tecnologia abbiamo zero gap tra le due pareti. Disegnata per essere montata come curva "Impact" sulle ultime due sezioni delle pompe calcestruzzo.



| DN | | DESCRIPTION | Spe + Spi | R | I | WORKING PRESSURE | | WEIGHT | |
|-----|---------|-----------------------------------|-----------|-----|-----|------------------|------|--------|------|
| in | mm | | | | | bar | psi | kg | lbs |
| 5.5 | 125/148 | Elbow LLH 125SC55 90G R275 impact | 3+12 | 235 | 275 | 85 | 1233 | 15.6 | 34.4 |

REDUCERS RIDUZIONI

DOUBLE LAYER REDUCER RIDUZIONI DOPPIA PARETE

LLN Reducers for concrete

Riduzioni in acciaio doppia parete per calcestruzzo

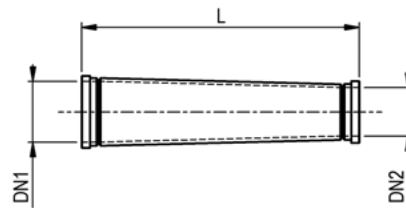
EXAMPLE | ESEMPIO

To indicate:

REDU double layer 7 mm + 4 mm, - 5,5"/4.5"
weld-on collars, quality LLN

Per indicare:

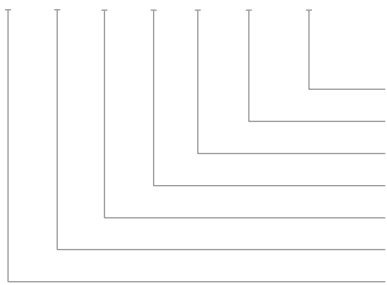
REDU IN ACCIAIO doppia parete spessore 7 mm + 4 mm,
collari 5.5"/4.5", qualità LLN



REDU LLN 125 SC55/100 SC45 L1000

PART IDENTIFICATION SYSTEM

Sistema di codifica



L1000 = Length

SC45 = Connection system

100 = Diameter output

SC55 = Collar size

125 = Diameter input

LLN = 7 mm inner layer 67HRC - 7 + 4 mm external layer

REDU = Reducer

Tab.1

Connecting system/Sistema di collegamento

| | | |
|--------|--|---|
| SC G | | "GU" System - Grooved Sistema "GU" - Mis. in pollici |
| SC M | | "GU" System - Metric Sistema "GU" - Mis. metriche |
| HD | | "GU" System - Raised Sistema "GU" - Mis. speciali |
| SW | | "OR" System - Male-Fem. Std. Sistema "OR" - M + F std. |
| Z - ZX | | "OR" System - M + F conic Sistema "OR" - M + F conico |

Tab.2

Weld-on collar sizes/Dimensioni collari

| | |
|----|----------------|
| 40 | 4" - 100 |
| 44 | 4.4" - 112/148 |
| 45 | 4.5" - 100/127 |
| 50 | 5" - 125 |
| 55 | 5.5" - 125/148 |
| 60 | 6" - 150 |
| 65 | 6.5" - 150/178 |

COLLARS COLLARINO

METRIC SYSTEM "M" SISTEMA METRICO "M"

Double Layer Collar
Collarino doppia parete



Double layer collars with chromium carbide cast insert (for straight pipes) / *Collare doppia parete con inserti ai carburi di cromo*

| D.N. | | MODEL - Tipo | PART NUMBER - Codice | kg | lbs |
|------|---------|------------------------|----------------------|-----|------|
| in | mm | | | | |
| 4.5" | 100/127 | COLL ASS SC45 L40 | S1037608 | 1.9 | 4.18 |
| 5" | 112/142 | COLL ASS SC50 L40 | S2002165 | 1.7 | 3.74 |
| 5.5" | 125/148 | COLL ASS SC55 L40 | S1038315 | 1.6 | 3.5 |
| 6.5" | 150/178 | COLL ASS SC65 L40 | S2038786 | 2.3 | 5.07 |
| 4.5" | 100/127 | COLL ASS SC45 L40 DECK | S2000847 | 1.9 | 4.18 |
| 5.5" | 112/142 | COLL ASS SC55 L40 DECK | S1044056 | 1.6 | 3.5 |

Other sizes upon request / *Altre misure a richiesta*

COLLARS
COLLARINO

HEAVY DUTY SYSTEM "HD"
SISTEMA HEAVY DUTY "HD"

Double Layer Collar
Collarino doppia parete

HD

40 DOUBLE LAYER
PIPE SYSTEMS



| D.N. | | MODEL - Tipo | PART NUMBER - Codice | kg | lbs |
|------|-----------|---------------|----------------------|------|------|
| in | mm | | | | |
| 4" | 100/131.6 | COLL ASS HD40 | S2020421 | 1.64 | 3.61 |
| 5" | 125/157.2 | COLL ASS HD50 | S2056798 | 2.10 | 4.63 |

COLLARS COLLARINO

OR SYSTEM "S" SISTEMA OR "S"

Double Layer Male-Female collar
Collarino maschio/femmina a doppia parete

S



| D.N. | | MODEL - Tipo | PART NUMBER - Codice | kg | lbs |
|------|-----|---------------|----------------------|------|------|
| in | mm | | | | |
| 6" | 150 | COLL ASS SM60 | S2008126 | 4.01 | 8.84 |
| 6" | 150 | COLL ASS SF60 | S2008127 | 3.25 | 7.16 |

COLLARS COLLARINO

OR SYSTEM "Z" SISTEMA OR "Z"

Double Layer Collar
Collarino doppia parete



| D.N. | | MODEL - Tipo | PART NUMBER - Codice | kg | lbs |
|------|---------|---------------|----------------------|------|------|
| in | mm | | | | |
| 5" | 125/168 | COLL ASS MZ50 | S2002136 | 2.80 | 6.17 |
| 5" | 125/168 | COLL ASS FZ50 | S2002131 | 3.70 | 8.15 |

COLLARS COLLARINO

OR SYSTEM "ZX" SISTEMA OR "ZX"

Double Layer Male-Female collar
Collarino maschio/femmina a doppia parete



| D.N. | | MODEL - Tipo | PART NUMBER - Codice | kg | lbs |
|------|---------|----------------|----------------------|------|------|
| in | mm | | | | |
| 5" | 125/177 | COLL ASS ZX50 | S3018917 | 2.72 | 5.99 |
| 5" | 125/177 | COLL ASS ZXF50 | S3034488 | 2.80 | 6.17 |

SHAPED PIPES TUBAZIONI SAGOMATE

TYPE "SHAPED" TIPO SAGOMATO

STD VERSION – Pipe S355/Elbow S355
VERSIONE STD – Tubo S355/Curva S355

Mn VERSION – Pipe S355/Elbow Mn
VERSIONE Mn – Tubo S355/Curva Mn

LLT VERSION – Double layer pipe/Double layer elbows th. 7+3
VERSIONE LLT – Tubo doppia parete/Curva doppia parete sp. 7+3

LLT VERSION – Double layer pipe/Double layer elbows th. 10+3
VERSIONE LLT – Tubo doppia parete/Curva doppia parete sp. 10+3





50

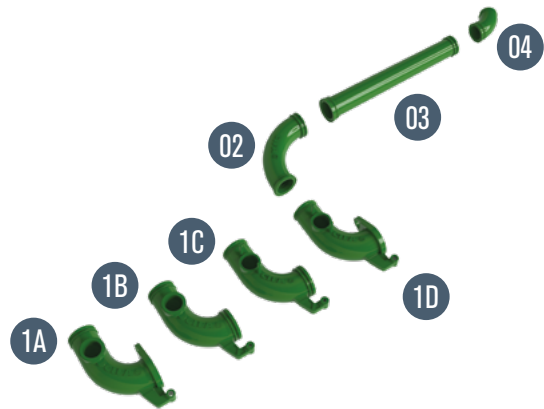
BACK END KITS



BACK END KITS BACK END KITS

CIFA
CIFA

Cifa Truck Pump Kit
Kit ricambi per Pompa CIFA



| REF | PART NUMBER Codice | DESCRIPTION |
|------|-----------------------|--|
| FP01 | S2040908 | SCREW FIXING TYPE BALL STOP KIT (PATENTED) |
| FP01 | S2040909 | COUPLING FIXING BALL STOP KIT |

| REF | DESCRIPTION | PART NUMBER Codice MN | PART NUMBER Codice LLN | PART NUMBER Codice LLH |
|-----|--|--------------------------|---------------------------|---------------------------|
| 1 | Elbow 175FLAN/150MP60 90G EXIT 230-260 | / | / | S2028183 |
| 1A | Elbow 175FLAN/150MP60 90G EXIT BW S9 | S1030242 | S1026325 | / |
| 1B | Elbow 175FZ70/150MP60 90G EXIT BW S8 | S1030250 | S1026508 | / |
| 1C | Elbow 17SFZ70/150MP60 90G EXIT S8 | S1015708 | / | S2021765 |
| 1D | Elbow 175FLAN/150MP60 90G EXIT S9 | S1023245 | / | S2021763 |
| 2 | Elbow 150FP60/150MZ60 90G EXIT CIFA | S1015711 | S1026130 | S2021764 |
| 3 | REDU 150FZ60/125MPSO L1287 | / | S1026125 | S2003311 |
| 4 | Elbow LLH 125SCSS/125FPSO 30G R235 | / | / | S2011513 |
| | Elbow LLH 125SC55/125FP50 35G R315 | / | / | S2005811 |
| | Elbow LLH 125SCSS/125FP50 42G R235 SAG | / | / | S1026121 |
| | Elbow LLH 125SC55/125FPSO 42G R315 | / | / | S1032399 |
| | Elbow LLH 125SC55/125FP50 SOG R235 | / | / | S2029322 |
| | Elbow LLH 125SC55/125FPSO SSG R235 | / | / | S2003041 |

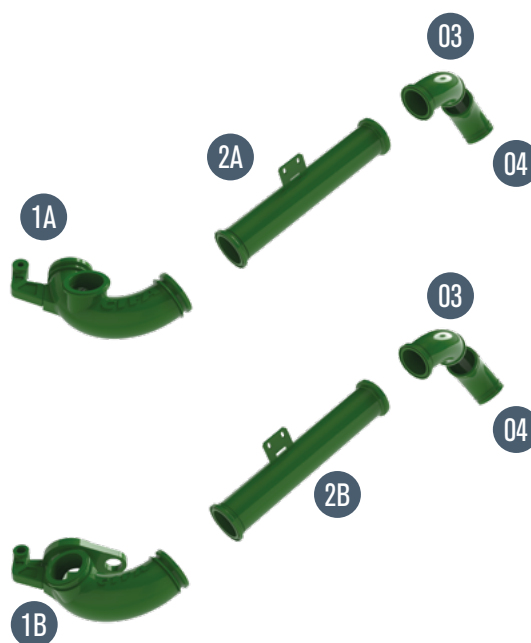
BACK END KITS

BACK END KITS

CIFA
CIFA

Cifa Pump Mixer

Kit ricambi per pump mixer CIFA

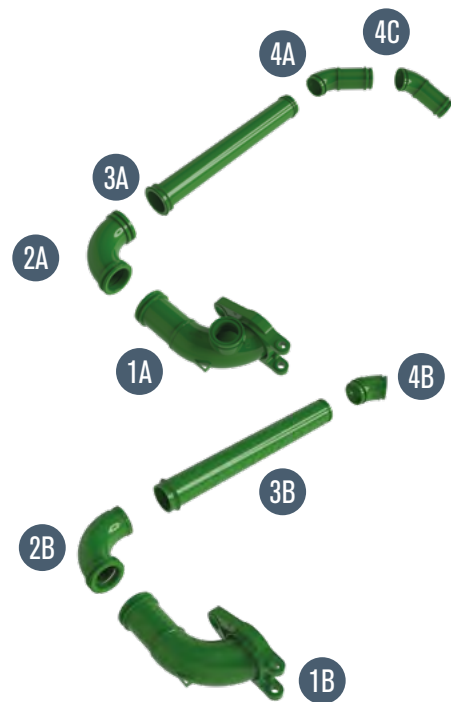


| REF | DESCRIPTION | PART NUMBER Codice STD | PART NUMBER Codice LLN | PART NUMBER Codice LLH |
|-----|---|---------------------------|---------------------------|---------------------------|
| 1A | ELBOW LLN 12SFZ50/125M 1256 | / | S2015852 | / |
| 1B | ELBOW LLN 12SFZ50/125M 1256 WITH FLANGE | / | S2015890 | / |
| 2A | CONNECTION PIPE L785 | S000239266 | / | S1037177 |
| 2B | CONNECTION PIPE L815 | S1010648 | / | S1035920 |
| 3 | ELBOW 55G | S000239267 | S1035914 | S2003041 |
| 4 | ELBOW 60G | S000231617 | S1026114 | S2002358 |

BACK END KITS BACK END KITS

PUTZMEISTER PUTZMEISTER

Putzmeister Truck Pump Kit - Type 1
Kit ricambi per Pompa Putzmeister - Tipo 1



| REF | DESCRIPTION | PART NUMBER Codice STD | PART NUMBER Codice LLN | PART NUMBER Codice LLT | PART NUMBER Codice LLH |
|-----|--------------------------------------|---------------------------|---------------------------|---------------------------|---------------------------|
| 1A | Elbow 175FLAN/150ZXF6 90G EXIT + FP | S2023216 | / | / | S2031069 |
| 1B | Elbow 175FLAN/150ZXF6 90G EXIT NO FP | / | / | / | S2031070 |
| 2A | Elbow 150ZXF6/150ZXM6 90G EXIT PZ | S2023218 | / | / | S2031066 |
| 2B | Elbow 150ZXM6/150SK60 EXIT PZ | S2023217 | / | / | / |
| 3A | REDU 150ZXM6/125SC55 L1200 | S2030670 | S2030569 | / | / |
| 3B | REDU 150SK60/125SC55 L1200 | S2030668 | S2030560 | / | / |
| 4A | Elbow 125SC55 45G R235 SAG PZ | S2026460 | / | S2030312 | / |
| 4B | Elbow 125SC55 45G R235 | S2023200 | / | / | S2001069 |
| 4C | Elbow 125SC55 SAG530S | S2048495 | / | S2030329 | / |

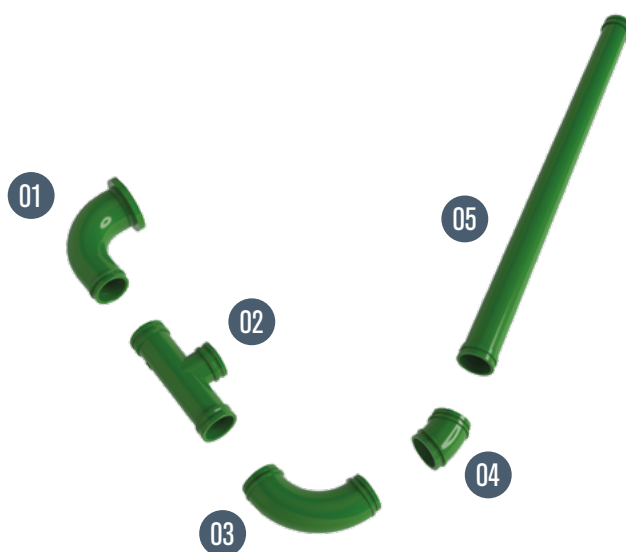
BACK END KITS

BACK END KITS

PUTZMEISTER

PUTZMEISTER

Putzmeister Pump Mixer - Type 2
 Kit ricambi per pump mixer Putzmeister - Tipo 2



50
 BACK END KITS

| REF | DESCRIPTION | PART NUMBER Codice STD | PART NUMBER Codice LLN | PART NUMBER Codice LLT | PART NUMBER Codice LLH |
|-----|-------------------------------|---------------------------|---------------------------|---------------------------|---------------------------|
| 1 | Elbow LLN 150FLAN/125SC55 90G | / | S2031072 | / | / |
| 2 | PIPE 125SC55 L500 | / | / | / | S2032892 |
| 3 | Elbow 125SC55 90G R275 | S000231381 | S2030349 | / | S1025876 |
| 4 | Elbow 125SC55 30G R235 | / | S2030341 | S2030327 | / |
| 5 | REDU 125SC55/100SC45 L1900 | S2039329 | S2030547 | / | / |

BACK END KITS BACK END KITS

SCHWING SCHWING

Schwing Truck Pump Kit - Type 1
Kit ricambi per Pompa Schwing - Tipo 1



| REF | DESCRIPTION | PART NUMBER Codice MN | PART NUMBER Codice LLN | PART NUMBER Codice LLH |
|-----|---------------------------------------|--------------------------|---------------------------|---------------------------|
| 1 | Elbow 17SFLAN/17SFLAN 14G EXIT SW | S2023221 | / | S2031071 |
| 2 | Elbow 17SFLAN/1SOSM60 90G EXIT SW OLD | S2023222 | / | S2031068 |
| 3A | Elbow 1SOSF60/15OSM60 90G EXIT SW | S2031076 | / | S2031060 |
| 3B | Elbow 15OSF60/15OSM60 90G L319 SW | / | / | S2031061 |
| 3C | Elbow 1SOSF60/15OSM60 90G L400 SW | / | / | S2031062 |
| 3D | Elbow 15OSF60/15OSM60 90G L425 SW | / | / | S2031063 |
| 3E | Elbow 15OSF60/15OSM60 90G L430 SW | S2023224 | / | S2031064 |
| 3F | Elbow 15OSF60/15OSM60 90G L630 SW | / | / | S2031065 |
| 4 | REDU 15OSF60/125SC55 L1240 | / | S2055279 | / |
| | REDU 15OSF60/125SC55 L1290 | / | S2030557 | / |
| | REDU 15OSF60/125SC55 L1330 | / | S2030563 | / |
| | REDU 15OSF60/125SC55 L1460 | / | S2030564 | / |
| | REDU 15OSF60/125SC55 L1600 | S2030669 | S2030558 | S2030538 |
| | REDU 15OSF60/125SCSS L3000 | / | S2030559 | / |
| 5 | Elbow LLH 12SSCSS 30G R23S | / | / | S2030308 |
| | Elbow LLH 12SSCSS 40G R235 SAG | / | / | S2030311 |
| | Elbow LLH 125SC55 45G R235 SAG | / | / | S2030313 |
| | Elbow LLH 12SSC55 50G R235 SAG | / | / | S2030314 |
| | Elbow LLH 125SC55 52.SG R235 | / | / | S2036693 |

BACK END KITS

BACK END KITS

SCHWING

SCHWING

Schwing Truck Pump Kit - Type 2
 Kit ricambi per Pompa Schwing - Tipo 2



| REF | DESCRIPTION | PART NUMBER Codice MN | PART NUMBER Codice LLN | PART NUMBER Codice LLH |
|-----|---------------------------------------|--------------------------|---------------------------|---------------------------|
| 1 | ADAPTER FLANGE EXIT Elbow SW CT | S2023225 | / | / |
| 2 | Elbow 175FLAN/150SFU6 90G EXIT SW NEW | S2023223 | / | S2031067 |
| 3 | PIPE 150SMU6/150SM60 LXXX | | LENGTH ON DEMAND | |
| 4 | Elbow 150SF60/150SM60 90G EXIT SW | / | / | S2031060 |
| | REDU 150SF60/125SC55 L1000 | / | S2040861 | / |
| | REDU 150SF60/125SC55 L1240 | / | S2040862 | / |
| | REDU 150SF60/125SC55 L1290 | / | S2030557 | / |
| | REDU 150SF60/125SC55 L1330 | / | S2030563 | / |
| | REDU 150SF60/125SC55 L1460 | / | S2030564 | / |
| 5 | REDU 150SF60/125SC55 L1500 | / | S2030565 | S2030537 |
| | REDU 150SF60/125SC55 L1550 | / | S2030566 | / |
| | REDU 150SF60/125SC55 L1600 | / | S2030558 | S2030538 |
| | REDU 150SF60/125SC55 L1650 | / | S2040863 | / |
| | REDU 150SF60/125SC55 L1885 | / | S2030567 | / |
| | REDU 150SF60/125SC55 L3000 | / | S2030559 | / |

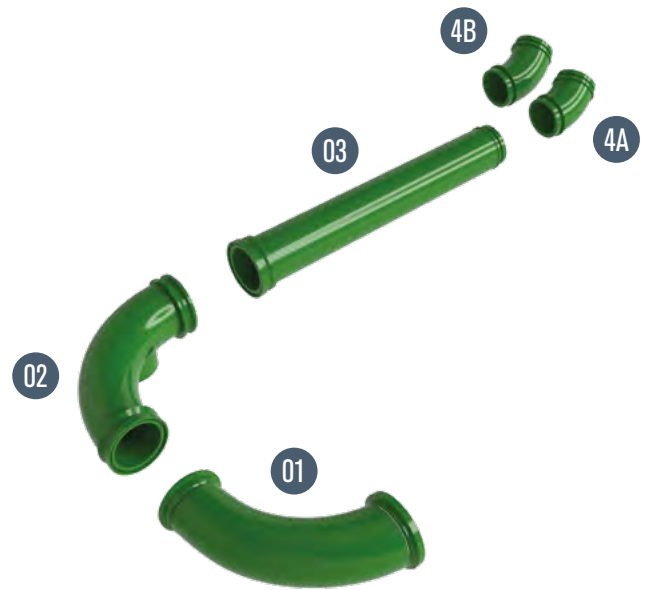
BACK END KITS

BACK END KITS

SERMAC

SERMAC

Sermac Truck Pump Kit - Type 1
 Kit ricambi per Pompa Sermac - Tipo 1



| REF | DESCRIPTION | PART NUMBER Codice MN | PART NUMBER Codice LLN | PART NUMBER Codice LLH |
|-----|-----------------------------------|--------------------------|---------------------------|---------------------------|
| 1 | Elbow MN 175FZ70/1SOMZ60 90G EXIT | S2031077 | / | / |
| 2 | Elbow MN 1SOFZ60/1SOMZ60 90G EXIT | S2031075 | / | / |
| 3 | REDU 150FZ60/125SCSS L1070 | S2030636 | S2030554 | / |
| 4A | Elbow 55 35G R235 | S2030376 | S2030343 | S2007997 |
| 4B | Elbow 1255C 426 R315 | S2030377 | S2030344 | S2030310 |

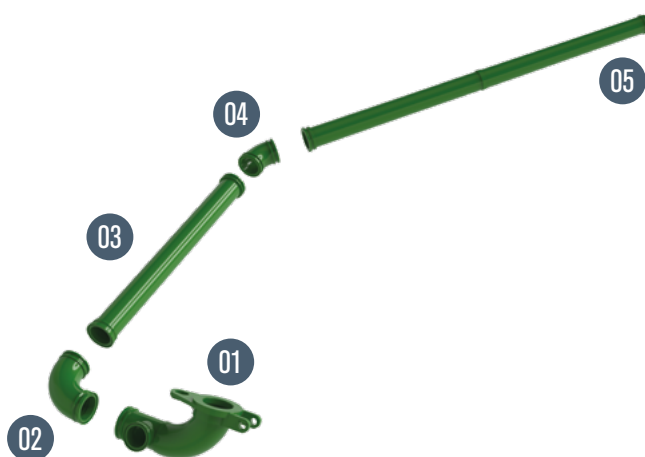
BACK END KITS

BACK END KITS

SERMAC

SERMAC

Sermac Truck Pump Kit - Type 2
Kit ricambi per Pompa Sermac - Tipo 2



50
 BACK END KITS

| REF | DESCRIPTION | PART NUMBER Codice LLH |
|-----|------------------------------------|---------------------------|
| 1 | Elbow LLH 175FLAN/150MZ60 90G EXIT | S2048832 |
| 2 | Elbow LLH 150FZ60/150MZ60 90G R280 | S2049064 |
| 3 | PIPE LLH 150FZ60/150MP60 LXXX | LENGHT ON DEMAND |
| 4 | Elbow LLH 150FP60/150MP60 45G R228 | S2032851 |
| 5 | REDU LLH 150FP60/125SC55 L3000 | S2031223 |



60

RUBBER HOSE & NOZZLE



60 RUBBER
HOSE & NOZZLE

HOSE TUBI

RUBBER HOSE TUBI IN GOMMA

Rubber Hoses for concrete

Tubi in gomma per calcestruzzo

DESCRIPTION | DESCRIZIONE

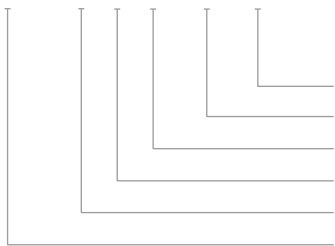
DESIGNATION: Rubber hose
 TUBE: Abrasion resistant synthetic rubber
 REINFORCEMENT: High-tensile steel cords
 COVER: Pin-pricked synthetic rubber
 OPERATING TEMPERATURE: -40°C to +70°C (-40°F to +158°F)
 WORKING PRESSURE: 100 bar (when new)
 BURST PRESSURE: 200 bar
 INTERNAL COLLAR: Tempered 50/55 HRC
 According to the EN12001:2009
 "Conveying, spraying and placing machines for concrete and mortar - Safety Requirements"
 SAFETY FACTOR for pipes, elbows, couplings and accessories: 2



RUBBER HOSE 125 SC 55 L4000 2PA

PART IDENTIFICATION SYSTEM

Sistema di codifica



2PA = Two pressed fittings
 L4000 = Length
 55 = 5.5" - weld-on collars
 SC = Connecting system code
 125 = Ø 125 mm - 5" Internal diameter
 RUBBER HOSE = Rubber hose with metal layers

| Hose I.D. | | | Hose O.D. | | Max working pressure | | Burst pressure | | Minimum elbow radius | | Weight | |
|-----------|-------|-----|-----------|------|----------------------|------|----------------|------|----------------------|-------|--------|--------|
| DN | mm | in | mm | in | bar | psi | bar | psi | mm | in | kg/m | lbs/ft |
| 51 | 50,8 | 2 | 70 | 2,76 | 85 | 1230 | 200 | 2900 | 275 | 10,83 | 3,03 | 2,04 |
| 60 | 63,5 | 2,5 | 88 | 3,46 | 85 | 1230 | 200 | 2900 | 300 | 11,81 | 4,48 | 3,01 |
| 80 | 76,2 | 3 | 102 | 4,02 | 100 | 1450 | 200 | 2900 | 350 | 13,78 | 5,46 | 3,67 |
| 102 | 101,6 | 4 | 130 | 5,12 | 100 | 1450 | 200 | 2900 | 400 | 15,75 | 8,46 | 5,69 |
| 130 | 127 | 5 | 155 | 6,10 | 100 | 1450 | 200 | 2900 | 500 | 19,69 | 9,63 | 6,47 |

According to the EN12001:2009
 "Conveying, spraying and placing machines for concrete and mortar - Safety Requirements"
 SAFETY FACTOR for pipes, elbows, couplings and accessories: 2

HOSE TUBI

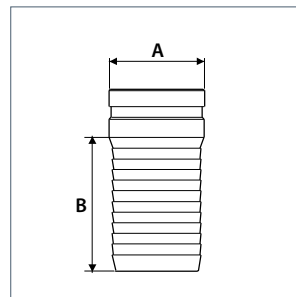
FITTING AND CLAMP PORTAGOMMA E FASCETTA

Hardened Hose fittings
Raccordi portagomma temprati

DESCRIPTION | DESCRIZIONE

Drop forged steel hose suitable for standard application
Raccordo in acciaio stampato a caldo utilizzabile per applicazioni standard

WORKING PRESSURE:
110 bar - according to ISO EN 12001: 2012
PRESSIONE DI LAVORO:
110 bar - secondo ISO EN 12001: 2012



| D.N. | | MODEL Tipo | A | | B | | kg | lbs |
|-------|-----------|---------------|------|-------|------|-----|------|------|
| in | mm | | in | mm | in | mm | | |
| 2" | 50/60.3 | SC 20 | 2.37 | 60.3 | 4.33 | 110 | 0.90 | 1.98 |
| 2.5" | 65/73 | SC 25 | 2.87 | 73 | 4.72 | 120 | 1.20 | 2.64 |
| 3" | 75/88.9 | SC 30 | 3.50 | 88.9 | 4.92 | 125 | 1.25 | 2.75 |
| 3.25" | 75/97 | SC 34 | | | | | | |
| 4" | 100/114.3 | SC 40 | 4.50 | 114.3 | 5.12 | 130 | 2.50 | 5.51 |
| 4.5" | 100/127 | SC 45 | 5 | 127 | 5.12 | 130 | 3.30 | 7.27 |
| 5" | 125/141.3 | SC 50 | 5.56 | 141.3 | 6.10 | 155 | 3.65 | 8.05 |
| 5.5" | 125/148 | SC 55 | 5.82 | 148 | 6.10 | 155 | 3.95 | 8.70 |

HOSE TUBI

FITTING AND CLAMP PORTAGOMMA E FASCETTA

Hose clamps / Fascette stringitubo



| D.N. | | MODEL | PART NUMBER | Ø Min - Max | | A | | B | | kg | lbs |
|------|-----|-------|-------------|-------------|---------|-------|-----|------|----|------|------|
| in | mm | Tipo | Codice | in | mm | in | mm | in | mm | | |
| 3" | 75 | FA75 | S3012393 | 3.15-4.33 | 80-110 | 5.90 | 150 | 1.26 | 32 | 0.75 | 1.65 |
| 4" | 100 | FA100 | S3009690 | 4.72-5.51 | 120-140 | 7.28 | 185 | 1.26 | 32 | 0.87 | 1.92 |
| 5" | 125 | FA125 | S3009755 | 5.75-6.57 | 146-167 | 8.46 | 215 | 1.26 | 32 | 0.94 | 2.07 |
| 6" | 150 | FA150 | S3012394 | 7.48-8.35 | 190-212 | 10.08 | 256 | 1.26 | 32 | 1.05 | 2.31 |

Galvanized Hose fittings / Raccordi portagomma zincati



| D.N. | | MODEL | PART NUMBER | D | | A | | B | | kg | lbs |
|------|--------|-------------------|-------------|------|----|------|-------|------|-----|------|------|
| in | mm | Tipo | Codice | in | mm | in | mm | in | mm | | |
| 2.5" | 75/53 | RPE 25 G - 52/120 | S3012389 | 2.05 | 52 | 2.87 | 73 | 4.72 | 120 | 1 | 2.20 |
| 2.5" | 73/58 | RPE 25 G - 58/120 | S3012390 | 2.28 | 58 | 2.87 | 73 | 4.72 | 120 | 0.98 | 2.16 |
| 2.5" | 73/60 | RPE 25 G - 60/70 | S3012391 | 2.36 | 60 | 2.87 | 73 | 2.76 | 70 | 0.80 | 1.76 |
| 3" | 89/70 | RPE 30 G - 70/70 | S3009775 | 2.76 | 70 | 3.50 | 88.9 | 2.76 | 70 | 0.75 | 1.65 |
| 3" | 89/70 | RPE 30 G - 70/120 | S3009796 | 2.76 | 70 | 3.50 | 88.9 | 4.72 | 120 | 1.21 | 2.67 |
| 3" | 89/80 | RPE 30 G - 80/120 | S3009669 | 3.15 | 80 | 3.50 | 88.9 | 4.72 | 120 | 1.04 | 2.29 |
| 4" | 114/85 | RPE 40 M - 85/70 | S3009836 | 3.35 | 85 | 4.50 | 114.3 | 2.76 | 70 | 1.25 | 2.76 |
| 4" | 114/87 | RPE 40 M - 87/70 | S3012392 | 3.42 | 87 | 4.50 | 114.3 | 2.76 | 70 | 1.17 | 2.58 |

HOSE TUBI

VALVES VALVOLE

Outer Hose Valve

Valvola esterna per tubo in gomma

DESCRIPTION | DESCRIZIONE

Pneumatic valve, suitable to stop the concrete flow. It is mounted, externally, on the end hose and blocked at the terminal elbow of the boom.

Valvola pneumatica adatta al bloccaggio del flusso del calcestruzzo.

Viene applicata all'esterno del tubo in gomma e viene ancorata alla curva terminale del braccio.



| D.N. | | MODEL | PART NUMBER | kg | lbs |
|------|-----|------------------------|-------------|------|-------|
| in | mm | Tipo | Codice | | |
| 4.5" | 100 | SHUT OFF VALVE 4" L200 | L2013647 | 6.70 | 14.77 |
| 5.5" | 125 | SHUT OFF VALVE 5" L200 | L2049849 | 7.50 | 16.53 |

HOSE TUBI

VALVES VALVOLE

Outer Hose Valve

Valvola esterna per tubo in gomma

DESCRIPTION | DESCRIZIONE

Pneumatic valve, suitable to stop the concrete flow. It is mounted at the end of the concrete placement boom and blocked by two safety belts at the terminal elbow of the boom and at the rubber hose.

Valvola pneumatica adatta al bloccaggio del flusso del calcestruzzo. Viene applicata all'estremità del braccio di distribuzione e viene ancorata con doppia cinghia di sicurezza alla curva terminale del braccio e al tubo di gomma.



| D.N. | | MODEL | PART NUMBER | kg | lbs |
|------|-----|--------------|-------------|-------|-------|
| in | mm | Tipo | Codice | | |
| 4.5" | 100 | 100SC45 L600 | S2032899 | 17.50 | 38.58 |
| 5.5" | 125 | 125SC55 L600 | S1036207 | 22.50 | 49.60 |

NOZZLE

LANCIA PER LA PROIEZIONE DEL CALCESTRUZZO

SHOT-CRETE NOZZLE

LANCIA SHOT-CRETE

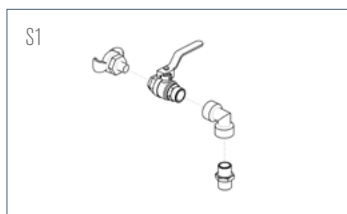
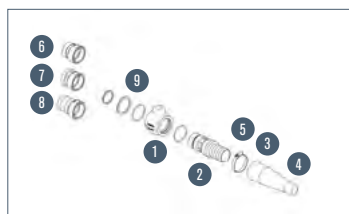
Nozzles for shot-crete applications GN 3815

Lancia per la proiezione del calcestruzzo per attrezzature shot-creting

DESCRIPTION | DESCRIZIONE

Light weight shot-crete nozzle, tip design allows for better patterns. Available with Heavy Duty, Grooved, threaded or Cam Arm collar.

Lancia di lavaggio leggera. Disponibile con collare Heavy Duty, Grooved, filettato o Cam Arm.



| IT | DESCRIPTION | GN 3815-1.1/2" | | | |
|-------------------|-------------------------------|----------------|-----------------------|-------|-------|
| | | MODEL - Tipo | PART NUMBER Codice | kg | lbs |
| SHOT-CRETE NOZZLE | | | | | |
| | Grooved end - Soft rubber tip | GN 3815 SC-S | S3010219 | 1.660 | 3.660 |
| | Heavy duty - Soft rubber tip | GN 3815 HD-S | S3010145 | 1.710 | 3.770 |
| | Cam-arm end - Soft rubber tip | GN 3815 CL-S | S3010192 | 1.660 | 1.660 |
| 1 | Body | | S3010139 | 0.260 | 0.573 |
| 2 | Fitting | | S3010189 | 0.670 | 1.477 |
| 3 | Rubber tip - soft | | K3005495 | 0.150 | 0.330 |
| 4 | Rubber tip - hard | | K3000407 | 0.170 | 0.375 |
| 5 | Tip clamp | | S3010265 | 0.027 | 0.059 |
| 6 | Grooved end | | S3011318 | 0.300 | 0.661 |
| 7 | Raised end | | S3005456 | 0.340 | 0.749 |
| 8 | Cam-arm end | | S3011317 | 0.460 | 1.014 |
| 9 | Sealing set | | S3005503 | 0.008 | 0.018 |
| | S1 - Fitting set | | S3005485 | 0.499 | 1.100 |
| | S2 - Fitting set | | S3010140 | 1.033 | 2.277 |

NOZZLE

LANCIA PER LA PROIEZIONE DEL CALCESTRUZZO

SHOT-CRETE NOZZLE

LANCIA SHOT-CRETE

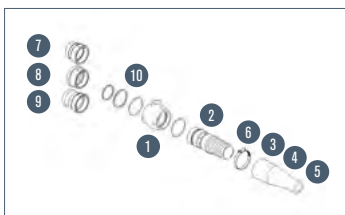
Nozzles for shot-crete applications GN 5020

Lancia per la proiezione del calcestruzzo per attrezzature shot-creting

DESCRIPTION | DESCRIZIONE

Light weight shot-crete nozzle, tip design allows for better patterns. Available with Heavy Duty, Grooved, threaded or Cam Arm collar.

Lancia di lavaggio leggera. Disponibile con collare Heavy Duty, Grooved, filettato o Cam Arm.



| IT | DESCRIPTION | GN 5020-2" | | | |
|----|--------------------------------|--------------|--------------------|-------|-------|
| | | MODEL - Tipo | PART NUMBER Codice | kg | lbs |
| | SHOT-CRETE NOZZLE | | | | |
| | Grooved end - Soft rubber tip | GN 5020 SC-S | L3005477 | 2.200 | 4.850 |
| | Heavy duty - Soft rubber tip | GN 5020 HD-S | L3005499 | 2.400 | 5.291 |
| | Cam-arm end - Soft rubber tip | GN 5020 CL-S | L3005465 | 2.460 | 5.423 |
| | Cam-arm end - Polyurethane tip | GN 5020 CL-P | S3016422 | 2.450 | 5.401 |
| 1 | Body | | S3005462 | 0.360 | 0.794 |
| 2 | Fitting | | S3004043 | 1.180 | 2.601 |
| 3 | Rubber tip - soft | | K2050498 | 0.250 | 0.551 |
| 4 | Rubber tip - hard | | K3000413 | 0.270 | 0.595 |
| 5 | Polyurethane tip | | S3010261 | 0.240 | 0.529 |
| 6 | Tip clamp | | K3005493 | 0.027 | 0.059 |
| 7 | Grooved end | | S3005505 | 0.420 | 0.926 |
| 8 | Raised end | | S3010175 | 0.530 | 1.168 |
| 9 | Cam-arm end | | K3006733 | 0.625 | 1.378 |
| 10 | Sealing set | | S3010159 | 0.008 | 0.017 |
| | S1 - Fitting set | | S3010202 | 0.655 | 1.444 |
| | S2 - Fitting set | | S3005507 | 1.270 | 2.800 |

NOZZLE

LANCIA PER LA PROIEZIONE DEL CALCESTRUZZO

SHOT-CRETE NOZZLE

LANCIA SHOT-CRETE

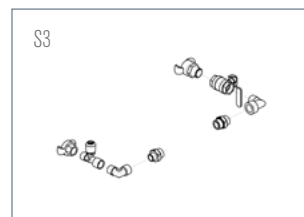
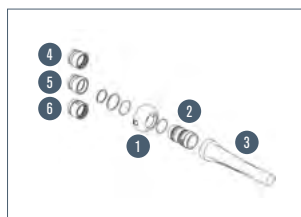
Nozzles for shot-crete applications GN 6525 P

Lancia per la proiezione del calcestruzzo per attrezzature shot-creting

DESCRIPTION | DESCRIZIONE

Shot-crete nozzle. Housing made out of aluminium, body spreader in hardened steel, complete with polyurethane tip. Available with metric, raised or grooved end. The nozzle can be disassembled for a fast and smooth cleaning.

Lancia di lavaggio leggera. Corpo in alluminio e inserto in acciaio temprato, completo di puntale in poliuretano. Disponibile con collare Heavy Duty, Grooved.



| IT | DESCRIPTION | GN 6525 -P | | | |
|----|--------------------|--------------|-----------------------|-------|--------|
| | | MODEL - Tipo | PART NUMBER Codice | kg | lbs |
| | SHOT-CRETE NOZZLE | | | | |
| | 2.5" grooved end | GN 6525 SC | L3005457 | 5.669 | 12.497 |
| | 3" grooved end | GN 6530 SC | S3010167 | 6.170 | 13.601 |
| | 2.5" Heavy duty | GN 6525 HD | S3010185 | 5.970 | 13.161 |
| 1 | Body | | S3011322 | 1.350 | 2.976 |
| 2 | Fitting | | S3011324 | 2.000 | 4.409 |
| 3 | Polyurethane tip | | S3014121 | 1.300 | 2.866 |
| 4 | Grooved end - 2.5" | | S3010188 | 0.909 | 2.004 |
| 5 | Grooved end - 3" | | S3010201 | 1.280 | 2.821 |
| 6 | Raised end - 2.5" | | S3010157 | 1.080 | 2.380 |
| | S3 - Fitting set | | S3010163 | 1.080 | 2.381 |

NOZZLE

LANCIA PER LA PROIEZIONE DEL CALCESTRUZZO

SHOT-CRETE NOZZLE

LANCIA SHOT-CRETE

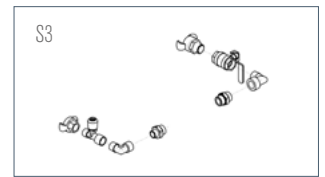
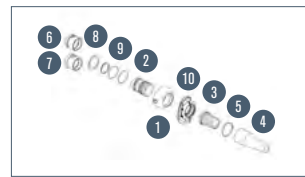
Nozzles for shot-crete applications GN 6630

Lancia per la proiezione del calcestruzzo per attrezzature shot-creting

DESCRIPTION | DESCRIZIONE

Shot-crete nozzle. Housing made out of aluminium, body spreader in hardened steel, complete with rubber tip. Available with metric, raised or grooved end. The nozzle can be disassembled for a fast and smooth cleaning.

Lancia di lavaggio leggera. Corpo in alluminio e inserto in acciaio temprato, completo di puntale in gomma. Disponibile con collare Heavy Duty, Grooved. Facile da smontare per una pulizia facile e agevole.



| IT | DESCRIPTION | GN 6630 | | | |
|-------------------|-------------------------------------|--------------|------------------------|-------|--------|
| | | MODEL - Tipo | PART NUMBER/ Codice | kg | lbs |
| SHOT-CRETE NOZZLE | | | | | |
| | 2.1/2" raised end - soft rubber tip | GN 6625 HD-S | L3007088 | 8.760 | 19.311 |
| | 3" grooved end - soft rubber tip | GN 6630 SC-S | L3005506 | 8.970 | 19.744 |
| | 3.1/4" metric end - soft rubber tip | GN 6634 SC-S | L3033464 | 9.390 | 20.700 |
| | 3" raised end - soft rubber tip | GN 6630 HD-S | L3007231 | 9.920 | 21.868 |
| 1 | Housing | | S3005478 | 1.250 | 2.755 |
| 2 | Spreader | | S3010200 | 2.250 | 4.960 |
| 3 | Adapter | | S3011327 | 1.500 | 3.306 |
| 4 | Rubber tip - soft | | K3005500 | 0.480 | 1.058 |
| 5 | Tip clamp | | S3014122 | 0.030 | 0.066 |
| 6 | Raised end - 2.1/2" | | S3010157 | 1.080 | 2.380 |
| 7 | Grooved end - 3" | | S3010201 | 1.280 | 2.821 |
| 8 | Spacer | | S3005450 | 0.090 | 0.198 |
| 9 | Sealing set | | S3010169 | 0.010 | 0.022 |
| 10 | Coupling & gasket | | S3005609 | 2.100 | 4.629 |
| | S3 - Fitting set | | S3010163 | 1.080 | 2.381 |

NOZZLE

LANCIA PER LA PROIEZIONE DEL CALCESTRUZZO

Nozzles for shot-crete applications - housing in aluminium, spreader in hardened steel and polyuretane tip
 Lancia per la proiezione del calcestruzzo per attrezzature shot-creting - corpo in alluminio, diffusore in acciaio temprato e punta in poliuretano

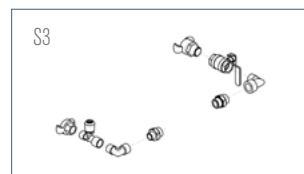
DESCRIPTION | DESCRIZIONE

Shot-crete nozzle. Housing made out of aluminium, body spreader in hardened steel, complete with polyurethane tip. Available with metric, raised or grooved end. The nozzle can be disassembled for a fast and smooth cleaning.

Lancia per la proiezione del calcestruzzo. Corpo in alluminio e inserto in acciaio temprato, completo di puntale in poliuretano. Disponibile con collare Heavy Duty, Grooved. Facile da smontare per una pulizia facile e agevole.

SHOT-CRETE NOZZLE

LANCIA SHOT-CRETE



| IT | DESCRIPTION | GN 6630 | | | |
|----|-------------------|--------------|--------------------|-------|--------|
| | | MODEL - Tipo | PART NUMBER Codice | kg | lbs |
| | SHOT-CRETE NOZZLE | | | | |
| | 3" grooved end | GN 6630 SC-P | S3010172 | 9.790 | 21.582 |
| 1 | Housing | | S3005478 | 1.250 | 2.755 |
| 2 | Spreader | | S3010200 | 2.250 | 4.960 |
| 3 | Adapter | | S3010264 | 0.920 | 2.028 |
| 4 | Polyurethane tip | | S3005496 | 1.300 | 2.865 |
| 5 | Grooved end - 3" | | S3010201 | 1.280 | 2.821 |
| 6 | Spacer | | S3005450 | 0.090 | 0.198 |
| 7 | Sealing set | | S3010169 | 0.010 | 0.022 |
| 8 | Coupling & gasket | | S3005609 | 2.100 | 4.629 |
| 9 | S3 - Fitting set | | S3010163 | 1.080 | 2.381 |

NOZZLE

LANCIA PER LA PROIEZIONE DEL CALCESTRUZZO

Nozzles for shot-crete applications - plastic body, hardened steel insert, steel manifold, with valves

Lancia per la proiezione del calcestruzzo per attrezzature shot-creting - corpo in plastica, inserti in acciaio temprato, collettore in acciaio, completa di valvole

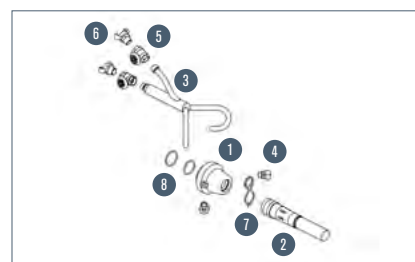
DESCRIPTION | DESCRIZIONE

2"- 50 mm Nozzle made by a plastic body, a hardened steel insert and a steel manifold, complete with valves.

Lancia con corpo in plastica. Inserti in acciaio temprato, collettore in acciaio, completa di valvole

SHOT-CRETE NOZZLE

LANCIA SHOT-CRETE



| IT | DESCRIPTION | MODEL - Tipo | PART NUMBER Codice | kg | lbs |
|----|-----------------|--------------|-----------------------|-------|--------|
| | Complete NOZZLE | LC 50 - CL | S3010227 | 4.650 | 10.251 |
| 1 | Body | | S3010258 | 0.500 | 1.102 |
| 2 | Fitting | | S3010158 | 1.800 | 3.968 |
| 3 | Manifold | | S3010209 | 0.870 | 1.918 |
| 4 | Fittings | | S3011297 | 0.140 | 0.308 |
| 5 | Valves | | K3006730 | 0.250 | 0.551 |
| 6 | Fittings | | S3010256 | 0.210 | 0.463 |
| 7 | Spring | | K3005470 | 0.052 | 0.114 |
| 8 | Sealing set | | S3010213 | 0.002 | 0.004 |

70

SHUT-OFF AND DIVERSION VALVES



70 SHUT-OFF AND
DIVERSION VALVES

SHUT-OFF VALVES

GHIGLIOTTINE A MARTELLO

TYPE "MBS"/"MT"

TIPO "MBS"/"MT"

Shut-off Valves for medium pressure
Valvola a martello per lavori a media pressione

DESCRIPTION | DESCRIZIONE

85 bar W.P. Complete with sealing rings, suitable for medium pressure. Manually operated.

Completa di tenuta, ideale per lavori a media pressione. Funzionamento manuale.



| D.N. | | MODEL - Tipo | PART NUMBER - Codice | kg | lbs |
|------|---------|--------------|----------------------|-------|-------|
| in | mm | | | | |
| 3" | 75-88.9 | SAR SC30 MBS | S3005701 | 11.30 | 24.91 |
| 4" | 100-114 | SAR SC40 MBS | S3005702 | 21.20 | 46.72 |
| 4.5" | 100-127 | SAR SC45 MBS | S2013444 | 16.80 | 37.03 |
| 5.5" | 125-148 | SAR SC55 MBS | S3005704 | 26.30 | 57.97 |

Shut-off Valves for high pressure / *Valvola a martello per lavori ad alta pressione*

DESCRIPTION | DESCRIZIONE

130 bar W.P. Complete with sealing rings, suitable for high pressure. Manually operated.

Completa di tenute, ideale per lavori ad alta pressione. Funzionamento manuale.



| D.N. | | MODEL - Tipo | PART NUMBER - Codice | kg | lbs |
|------|---------|--------------|----------------------|-------|--------|
| in | mm | | | | |
| 4.5" | 100-127 | SAR SC45 MT | S3011267 | 63.00 | 138.85 |
| 5.5" | 125-148 | SAR SC55 MT | S3005706 | 78.00 | 171.91 |

SHUT-OFF VALVES

GHIGLIOTTINE A MARTELLO

TYPE "MG"

TIPO "MG"

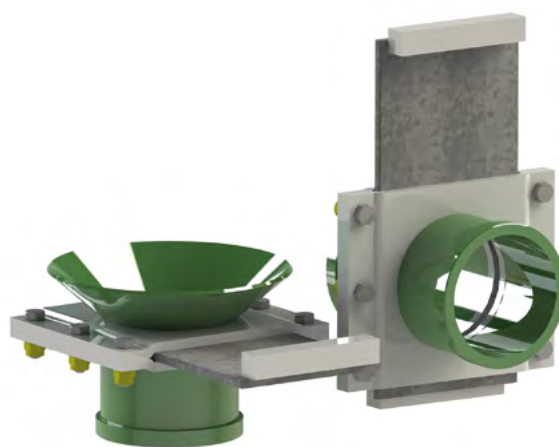
Tunnel placing shut-off valves

Valvola di chiusura con sistema di collegamento GU

DESCRIPTION | DESCRIZIONE

Manually operated, complete with "GU" system
weld-on collars

Funzionamento manuale. Connessione flange tipo GU



| D.N. | | MODEL - Tipo | PART NUMBER - Codice | kg | lbs |
|------|---------|--------------|----------------------|-------|-------|
| in | mm | | | | |
| 5.5" | 125-148 | SAR SC55 MG | S3005705 | 18.00 | 39.67 |

SHUT-OFF VALVES

GHIGLIOTTINA IDRAULICA

TYPE "1HT"

TIPO "1HT"

Shut-off Valve for concrete

Ghigliottina idraulica per calcestruzzo

DESCRIPTION | DESCRIZIONE

Shut-off valve 85-130 bar W.P.

The SAR 1HT shut-off valve allows to stop the concrete flow in a pumping pipeline. The shutting of the valve is made by a hydraulic cylinder, operated by a hand pump.

La ghigliottina SAR 1HT permette di interrompere il flusso del calcestruzzo su una linea di pompaggio. La ghigliottina è azionata da una pompa manuale.

WORKING PRESSURE:

85-130 bar, according to the required connecting system.

Please ask for information.

PRESSIONE DI LAVORO:

Pressione di esercizio 85-130 bar come da configurazione richiesta.



| D.N. | | MODEL - Tipo | PART NUMBER - Codice | kg | lbs |
|------|---------|----------------|----------------------|-----|--------|
| in | mm | | | | |
| 3" | 75/88.9 | SAR SC30 1HT.P | S3016169 | 60 | 132.27 |
| 4.5" | 100/127 | SAR SC45 1HT.P | S3010223 | 110 | 242.49 |
| 5.5" | 125/148 | SAR SC55 1HT.P | S3005708 | 175 | 385.79 |

- Other sizes upon request. The above specifications are indicative. The manufacturer reserves the right to make changes at any time. Altre misure su richiesta. Le specifiche sopra riportate sono indicative. Il produttore si riserva il diritto di apportare modifiche in qualsiasi momento.*

SHUT-OFF VALVES

GHIGLIOTTINA IDRAULICA

TYPE "2HT"

TIPO "2HT"

Shut-off Valve

Ghigliottina idraulica

DESCRIPTION | DESCRIZIONE

Shut-off valve 130-150 bar W.P.

The SAR 2HT shut-off valve allows to stop the concrete flow in a pumping pipeline.

The shutting of the valve is performed by two hydraulic cylinders, operated by a hand pump.

La ghigliottina SAR 2HT permette di interrompere il flusso del calcestruzzo su una linea di pompaggio. La chiusura della valvola è affidata a due cilindri idraulici, azionati da una pompa a mano.

WORKING PRESSURE:

130-150 bar, according to the required connecting system. Please ask for information.

PRESSIONE DI LAVORO:

Pressione di esercizio 130-150 bar come da configurazione richiesta.



| D.N. | | MODEL - Tipo | PART NUMBER - Codice | kg | lbs |
|------|---------|----------------|----------------------|-----|--------|
| in | mm | | | | |
| 5.5" | 125/148 | SAR SC55 2HT.P | S3005710 | 175 | 385.79 |

- Other sizes upon request. The above specifications are indicative. The manufacturer reserves the right to make changes at any time. Altre misure su richiesta. Le specifiche sopra riportate sono indicative. Il produttore si riserva il diritto di apportare modifiche in qualsiasi momento.*

HYDRAULIC KIT FOR VALVES KIT OLEODINAMICI PER VALVOLE

2 CYLINDER KIT KIT 2 CILINDRI

Hydraulic Valve - 2 Cylinders
Valvola di chiusura a 2 cilindri

HYDRAULIC CONFIGURATION

Hand Pump Kit.
HAND PUMP / *Pompa manuale*

- Max pressure 200 bar



Hydraulic Valve - 2 Cylinders
Valvola di chiusura a 2 cilindri

HYDRAULIC CONFIGURATION

Distributor Kit.
MANUAL DISTRIBUTOR 3/8" / *Distributore manuale*

- Max pressure 200 bar



Hydraulic Valve - 2 Cylinders
Valvola di chiusura a 2 cilindri

HYDRAULIC CONFIGURATION

Power Pack Kit.
ELECTRIC POWER PACK / *Centralina*

- Power 4 Kw
- Max pressure 200 bar



DIVERSION VALVES

DEVIATORI

TYPE "MV"

TIPO "MV"

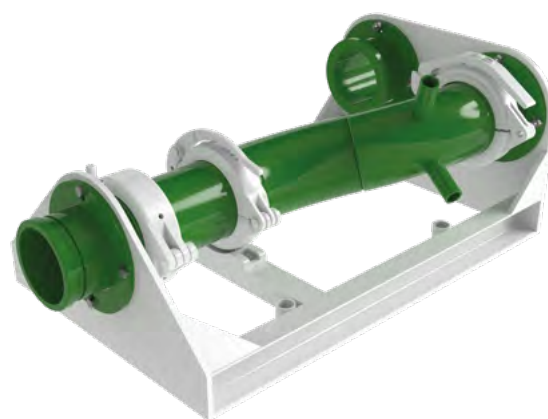
Diversion "S" Valve with GU system

Deviatori tipo "S" con sistema di collegamento GU

DESCRIPTION | DESCRIZIONE

Manually operated, 2, 3 and 4 ways, complete with "GU" system weld-on collars

Deviatori manuali a 2, 3 e 4 vie, con sistema di collegamento GU



| D.N. | | MODEL - Tipo | PART NUMBER - Codice | kg | lbs |
|------|-----|--------------|----------------------|-------|--------|
| in | mm | | | | |
| 2" | 50 | DVS SC20 M2V | S3034307 | 25.00 | 55.10 |
| 2.5" | 65 | DVS SC25 M2V | S3034308 | 25.00 | 55.10 |
| 3" | 75 | DVS SC30 M2V | S3034310 | 30.00 | 66.12 |
| 4.5" | 100 | DVS SC45 M2V | S3034311 | 45.00 | 99.18 |
| 5.5" | 125 | DVS SC55 M2V | S3034312 | 50.00 | 110.20 |

MODEL DVS M 3V e DVS M 4V
ON DEMAND / *Su richiesta*

DIVERSION VALVES

DEVIATORI

TYPE "2HT"

TIPO "2HT"

Diversion Valve for concrete Model DVV 2HT-V
 Deviatore idraulico per calcestruzzo Modello DVV 2HT-V

DESCRIPTION | DESCRIZIONE

Diversion valve 130-150 bar W.P.
 The DVV 2HT-V diversion valve allows to divert the concrete flow to two different directions.
 It is operated by two hydraulic cylinders and an hand pump.

Il deviatore DVV 2HT-V permette di dividere il flusso del calcestruzzo su due linee. Il deviatore è azionato da una pompa manuale.

The diversion valves type DVV / 2HT-V can withstand a maximum working pressure of 150 bar

Il deviatore idraulico DVV / 2HT-V può lavorare fino a pressioni di esercizio i 150 bar



| D.N. | | MODEL - Tipo | PART NUMBER - Codice | kg | lbs |
|------|---------|------------------|----------------------|-----|--------|
| in | mm | | | | |
| 5.5" | 125/148 | DVV SC55 2HT - P | S3016370 | 175 | 385.79 |

- The above specifications are indicative. The manufacturer reserves the right to make changes at any time
 Le specifiche sopra riportate sono indicative. Il produttore si riserva il diritto di apportare modifiche in qualsiasi momento.*

DIVERSION VALVES

DEVIATORI

TYPE "2H3"

TIPO "2H3"

Diversion "S" Valve for concrete | Model DVS 2H3
 Deviatore idraulico tipo "S" per calcestruzzo | Modello DVS 2H3

DESCRIPTION | DESCRIZIONE

Diversion valve 130-150 bar W.P.

"S" type, operated by a hydraulic hand pump (P) or an electro-hydraulic powerpack (E). It is a very flexible device, designed to satisfy the various needs of the job site. In fact it allows the diversion of the flow of concrete in two different directions ("A" and "B").

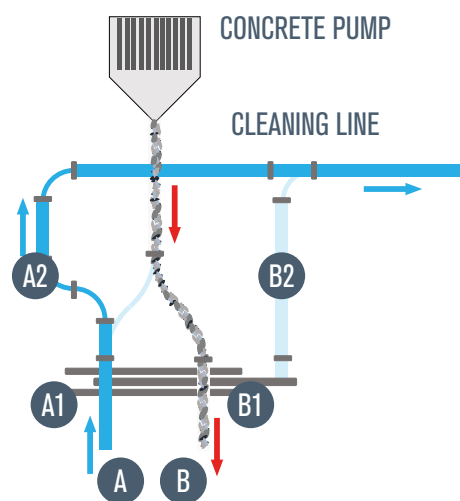
It is specifically designed to allow in the same time the pumping on one line and the cleaning of the other. On request a special swivel pipe system can be added to the discharge mouths (A2-B2), in order to avoid the use of flexible hoses to save the concrete during the cleaning operation. Please contact us for more information. **WORKING PRESSURE: 130 bar (150 bar on request).**

Il deviatore a DVS 2H3 di tipo "S", è azionato da una pompa idraulica manuale (P) o elettrica (E). È molto flessibile e risponde a tutte le esigenze di cantiere perchè permette di direzionare il getto del calcestruzzo in due differenti direzioni (A e B).

Consente contemporaneamente il pompaggio su una linea e la pulizia dell'altra. Su richiesta è possibile aggiungere alle bocche di scarico (A2-B2) uno speciale sistema di tubi girevoli ed evitare sprechi di calcestruzzo durante l'operazione di pulizia.

Richiedi maggiori informazioni.

PRESSIONE DI ESERCIZIO: 130 bar (150 bar su richiesta).



| D.N. | | MODEL - Tipo | PART NUMBER - Codice | kg | lbs |
|------|---------|----------------|----------------------|-----|--------|
| in | mm | | | | |
| 5.5" | 125/148 | DVS SC55-2H3-P | S3005714 | 705 | 1554.2 |

DIVERSION VALVES

DEVIATORI

TYPE "RR"

TIPO "RR"

Diversion "S" Valve for concrete | Model DVS 4RR
 Deviatore idraulico tipo "S" per calcestruzzo | Modello DVS 4RR

DESCRIPTION | DESCRIZIONE

85-150 bar W.P.

The DVS/4 RR diversion valve allows to divert the concrete flow to four different directions. It can be operated by a manual reduction gear. Electrohydraulic power - pack on request. The diversion valve can be equipped with weld-on collars, suitable for any connecting system.

Il deviatore a DVS 4RR permette di direzionare il getto di calcestruzzo in quattro differenti direzioni. È azionato da un riduttore manuale, motore elettrico a richiesta.

Il deviatore può essere fornito con collari saldati, compatibili con tutti i sistemi di connessione.



| D.N. | | MODEL - Tipo | PART NUMBER - Codice | kg | lbs |
|------|---------|--------------|----------------------|-----|-------|
| in | mm | | | | |
| 4.5" | 100/127 | DVS SC45-4RR | S3034313 | 270 | 595.2 |
| 5.5" | 125/148 | DVS SC55-4RR | S3034315 | 270 | 595.2 |

80

BOOMS



BOOMS BRACCI

TYPE "DL" TIPO "DL"

The concrete placement boom model DL12 is particularly suitable for concrete placing where direct distribution with truck-mounted concrete pumps or stationary concrete booms come up against technical and economic limitations.

Il distributore per calcestruzzo DL12 è particolarmente adatto per la distribuzione del calcestruzzo dove la distribuzione diretta con pompe per calcestruzzo autocarrate o fisse incontrano limitazioni tecniche ed economiche.



DIMENSIONS AND SPACE OCCUPIED

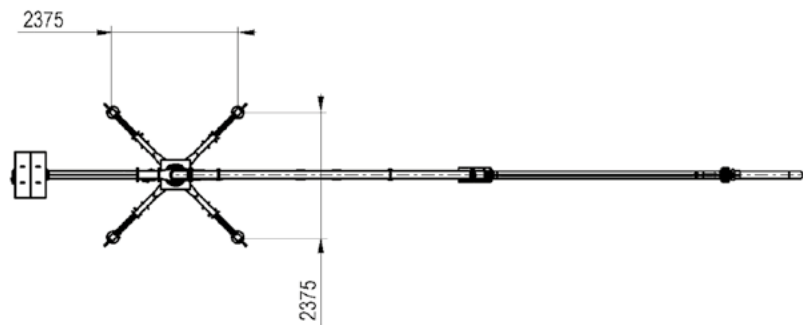
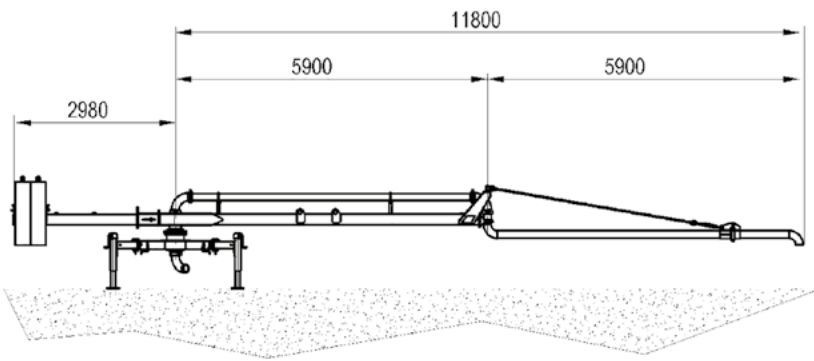
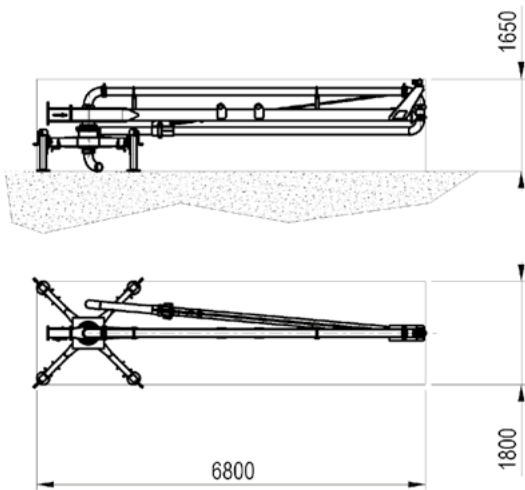
| | | |
|-----------------------------------|-------|----|
| Height (when in closed position): | 1.650 | mm |
| Width (when in closed position): | 1.800 | mm |
| Length (when in closed position): | 6.800 | mm |

Weight and loads

| | | |
|--|-------|----|
| Weight of the BOOM (without concrete): | 1.100 | Kg |
| COUNTERWEIGHT: | 1.250 | Kg |
| TOTAL WEIGHT: | 2.350 | Kg |
| Weight of the CONCRETE: | 400 | Kg |
| TOTAL WEIGHT: | 2.750 | Kg |

BOOMS BRACCI

TYPE "DL" TIPO "DL"



BOOMS

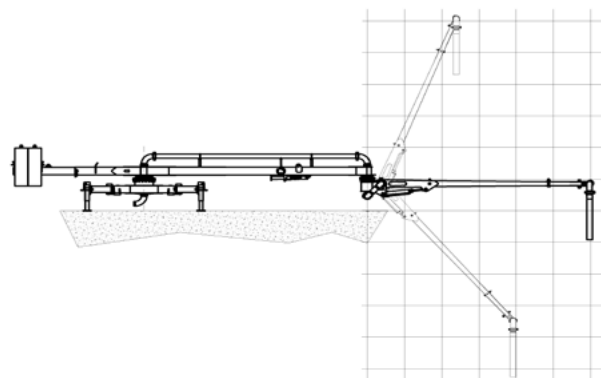
BRACCI

TYPE "DRV"

TIPO "DRV"

The concrete placement boom model DRV12
It is particularly suitable for casting slabs and columns
The second section moves in the vertical plane by
activating a hydraulic cylinder by means of a manual
pump.

*Il distributore per calcestruzzo DRV12 è particolarmente indicato
per il getto di solette e colonne
La seconda sezione si muove nel piano verticale azionando un
cilindro oleodinamico tramite una pompa manuale.*

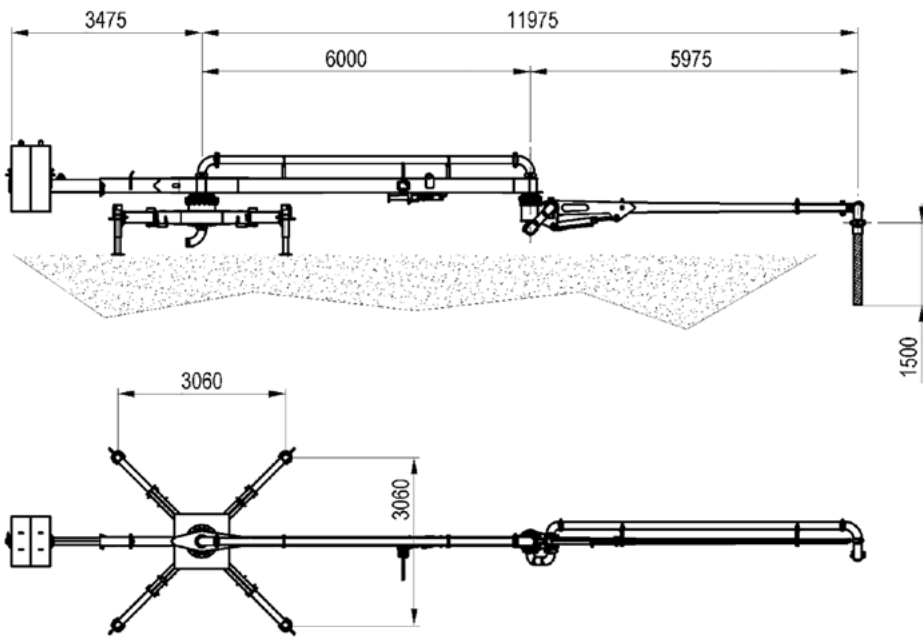
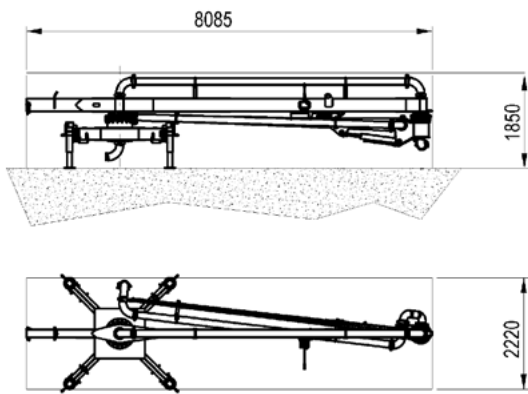


DIMENSIONS AND SPACE OCCUPIED

| | | |
|--|-------|----|
| Height (when in closed position): | 1.850 | mm |
| Width (when in closed position): | 2.220 | mm |
| Length (when in closed position): | 8.085 | mm |
| Weight and loads | | |
| Weight of the BOOM (without concrete): | 2.400 | Kg |
| COUNTERWEIGHT: | 1.650 | Kg |
| TOTAL WEIGHT: | 4.050 | Kg |
| Weight of the CONCRETE: | 400 | Kg |
| TOTAL WEIGHT: | 4.450 | Kg |

BOOMS
BRACCI

TYPE "DRV"
TIPO "DRV"



BOOMS

BRACCI

TYPE "BV"

TIPO "BV"

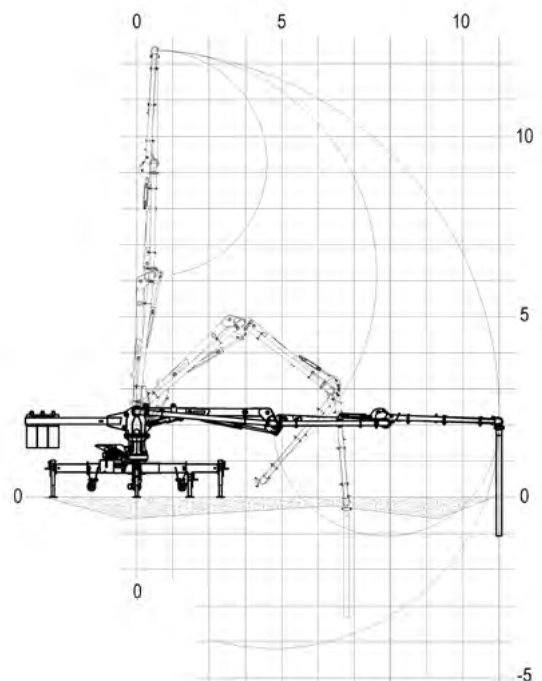
The fully hydraulic model BV13 concrete boom is a valid solution for casting in small areas difficult to reach with standard equipment.

Il distributore per calcestruzzo BV13, completamente idraulico, è una valida soluzione per getti in piccole aree difficilmente raggiungibili con attrezzature standard.



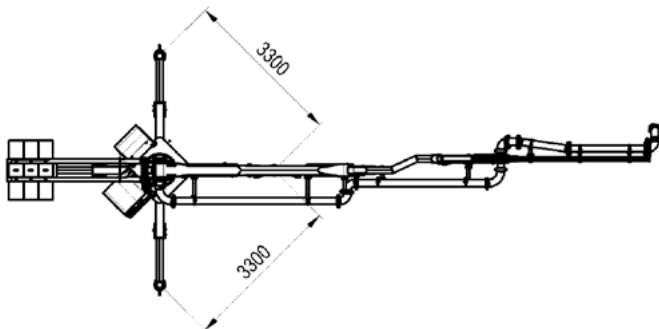
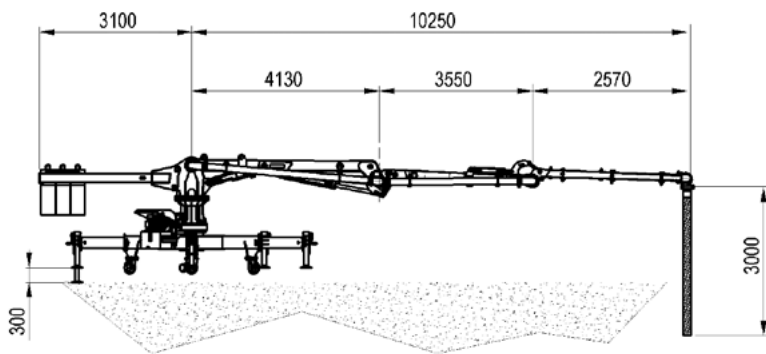
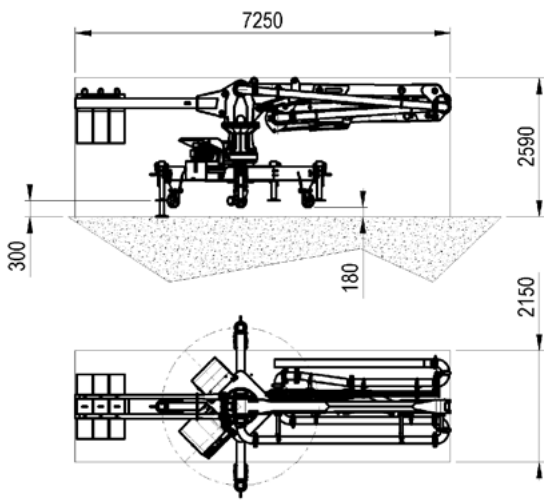
DIMENSIONS AND SPACE OCCUPIED BY THE BOOM

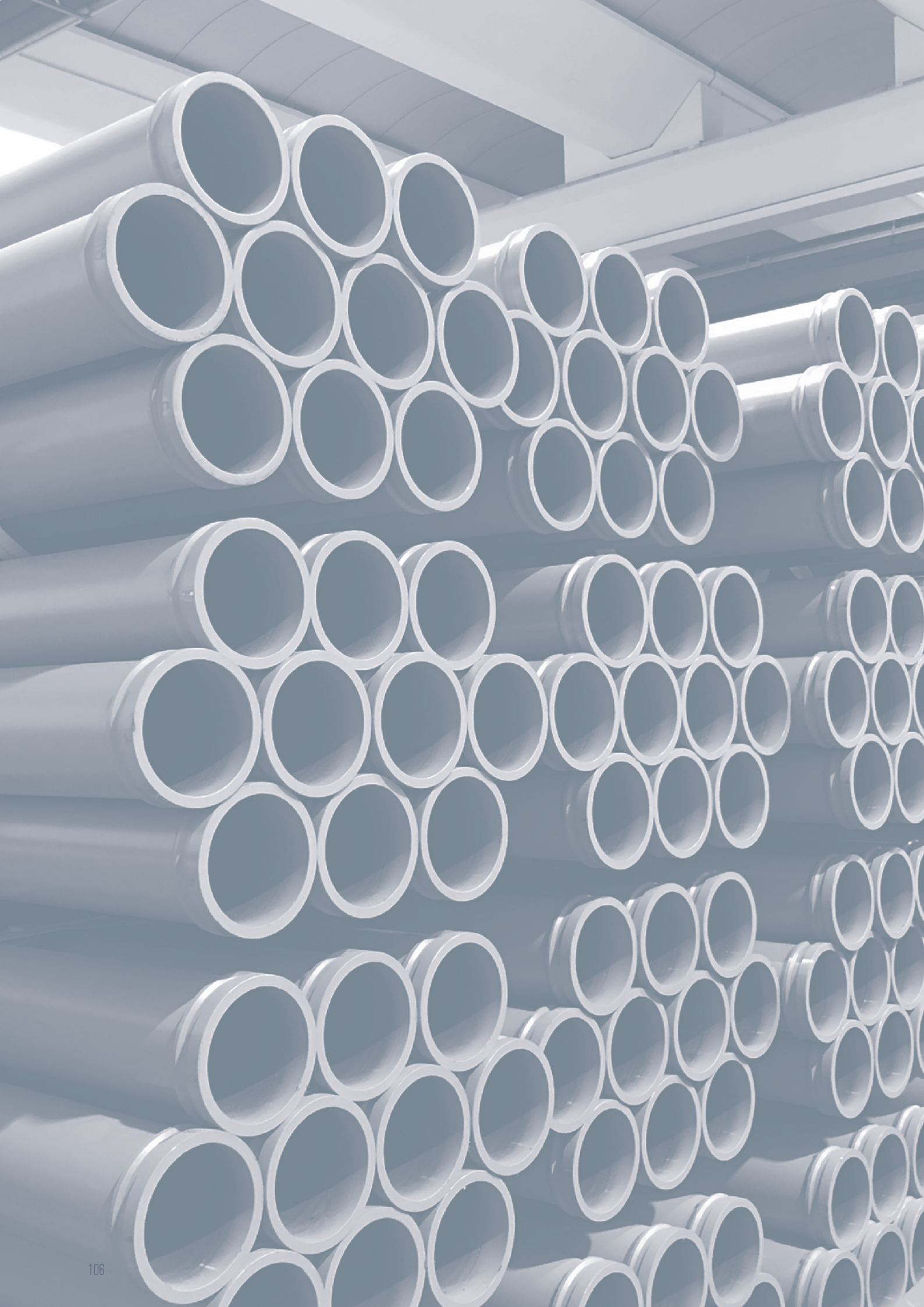
| | | |
|--|---------|---------|
| Height | 2.410 | mm |
| Width | 2.150 | mm |
| Length | 7.250 | mm |
| Weight and loads | | |
| Weight of complete boom | 2.900 | kg |
| Counterweight | 1.650 | kg |
| Total weight | 4.550 | kg |
| Total weight at each jack arm | 2.615 | kg |
| TOTAL WEIGHT: | 2.750 | kg |
| Technical data for the basic set up | | |
| Electric power | 380/440 | V |
| Three-phase + neutral + earth | | |
| Frequency | 50/60 | Hz |
| Power of the electric motor | 4 | kW |
| Technical data for the hydraulic power pack | | |
| Oil flow | 8.7 | lit/min |
| Maximum pressure | 245 | bar |



BOOMS
BRACCI

TYPE "BV"
TIPO "BV"





90

CLEANING SYSTEMS



CLEANING MATERIALS

ARTICOLI PER LA PULIZIA

SPONGE BALLS

PALLE DI SPUGNA

Rubber Sponge Balls - Soft
Palle di spugna - morbida



| Ø - O.D. | | PART NUMBER - Codice | Ø PIPE - Tubo | | WEIGHT - Peso (*) | |
|----------|-----|----------------------|---------------|-----|-------------------|------|
| in | mm | | in | mm | oz | g |
| 1.18 | 30 | K3005754 | 0.79 | 20 | 0.08 | 2.3 |
| 1.38 | 35 | K3005755 | 0.98 | 25 | 0.13 | 3.6 |
| 1.57 | 40 | K3005756 | 1.26 | 32 | 0.19 | 5.4 |
| 1.77 | 45 | K3005757 | 1.38 | 35 | 0.27 | 7.6 |
| 1.97 | 50 | K3005758 | 1.50 | 38 | 0.37 | 10.5 |
| 2.36 | 60 | K3005759 | 1.97 | 50 | 0.63 | 18 |
| 2.56 | 65 | K3005761 | 2.05 | 52 | 0.81 | 23 |
| 2.95 | 75 | K3005762 | 2.48 | 63 | 1.23 | 35 |
| 3.15 | 80 | K3005764 | 2.56 | 65 | 1.52 | 43 |
| 3.74 | 100 | K000400511 | 2.95 | 75 | 2.54 | 72 |
| 4.72 | 125 | K000400512 | 3.94 | 100 | 5.11 | 145 |
| 5.91 | 150 | K000400513 | 4.92 | 125 | 9.98 | 283 |
| 6.89 | 175 | K000400514 | 5.91 | 150 | 15.84 | 449 |
| 7.87 | 200 | K000202704 | 6.89 | 175 | 23.63 | 670 |

*Tolerance / Tolleranza +/- 10%

CLEANING MATERIALS

ARTICOLI PER LA PULIZIA

SPONGE BALLS

PALLE DI SPUGNA

Rubber Sponge Balls - Medium
Palle di spugna - media



| Ø - O.D. | | PART NUMBER - Codice | Ø PIPE- Tubo | | WEIGHT - Peso (*) | |
|----------|-----|----------------------|--------------|-----|-------------------|-----|
| in | mm | | in | mm | oz | g |
| 1.18 | 30 | K3005776 | 0.79 | 20 | 0.10 | 2.8 |
| 1.38 | 35 | K3005777 | 0.98 | 25 | 0.16 | 4.5 |
| 1.57 | 40 | K3005778 | 1.26 | 32 | 0.24 | 6.7 |
| 1.77 | 45 | K3005779 | 1.38 | 35 | 0.34 | 9.5 |
| 1.97 | 50 | K3005780 | 1.50 | 38 | 0.46 | 13 |
| 2.36 | 60 | K3005781 | 1.97 | 50 | 0.81 | 23 |
| 2.56 | 65 | S3011231 | 2.05 | 52 | 1.02 | 29 |
| 2.95 | 75 | K3005782 | 2.48 | 63 | 1.55 | 44 |
| 3.15 | 80 | K3005783 | 2.56 | 65 | 1.90 | 54 |
| 3.74 | 100 | K3005784 | 2.95 | 75 | 3.17 | 90 |
| 4.72 | 125 | S2033748 | 3.94 | 100 | 6.38 | 181 |
| 5.91 | 150 | K1040038 | 4.92 | 125 | 12.45 | 353 |
| 6.89 | 175 | K1040036 | 5.91 | 150 | 19.79 | 561 |
| 7.87 | 200 | K3005790 | 6.89 | 175 | 29.52 | 837 |

*Tolerance / Tolleranza +/- 10%

CLEANING MATERIALS

ARTICOLI PER LA PULIZIA

SPONGE BALLS

PALLE DI SPUGNA

Rubber Sponge Balls - Hard
Palle di spugna - dura



| Ø - O.D. | | PART NUMBER - Codice | Ø PIPE- Tubo | | WEIGHT - Peso (*) | |
|----------|-----|----------------------|--------------|-----|-------------------|------|
| in | mm | | in | mm | oz | g |
| 1.18 | 30 | S3011239 | 0.79 | 20 | 0.15 | 4.2 |
| 1.38 | 35 | K3005791 | 0.98 | 25 | 0.24 | 6.7 |
| 1.57 | 40 | S3017356 | 1.26 | 32 | 0.35 | 10.1 |
| 1.77 | 45 | K3005792 | 1.38 | 35 | 0.50 | 14.3 |
| 1.97 | 50 | K3005793 | 1.50 | 38 | 0.71 | 20 |
| 2.36 | 60 | K3005794 | 1.97 | 50 | 1.20 | 34 |
| 2.56 | 65 | K3005795 | 2.05 | 52 | 1.52 | 43 |
| 2.95 | 75 | NUOVO | 2.48 | 63 | 2.33 | 66 |
| 3.15 | 80 | K3005796 | 2.56 | 65 | 2.82 | 80 |
| 3.74 | 100 | K3005797 | 2.95 | 75 | 4.76 | 135 |
| 4.72 | 125 | S2033747 | 3.94 | 100 | 9.56 | 271 |
| 5.91 | 150 | K1040037 | 4.92 | 125 | 18.69 | 530 |
| 6.89 | 175 | K1040035 | 5.91 | 150 | 29.66 | 841 |
| 7.87 | 200 | K3005802 | 6.89 | 175 | 44.30 | 1256 |

*Tolerance / Tolleranza +/- 10%

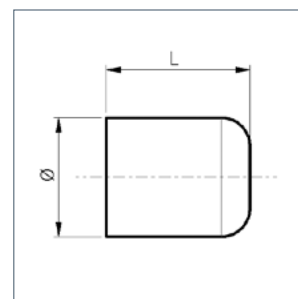
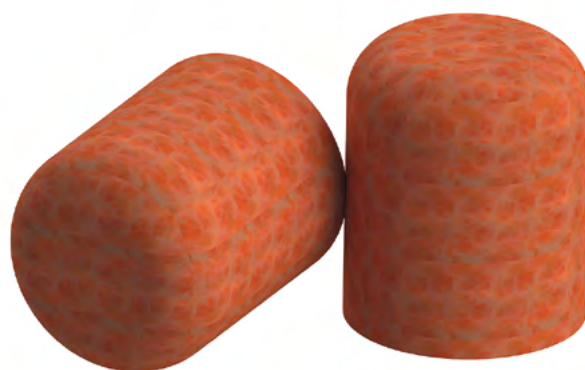
CLEANING MATERIALS

ARTICOLI PER LA PULIZIA

CLEANING OUT CYLINDERS

CILINDRI DI SPUGNA

Rubber Sponge Rollers Medium
Cilindri in spugna media



| Ø x L | | PART NUMBER - Codice | Ø PIPE- Tubo | | WEIGHT - Peso (*) | |
|-----------|---------|----------------------|--------------|-----|-------------------|-----|
| in | mm | | in | mm | oz | g |
| 4.92x5.91 | 125x150 | S2033785 | 4.02 | 120 | 12.14 | 344 |
| 5.91x7.09 | 150x150 | S2033786 | 4.92 | 125 | 20.62 | 585 |

*Tolerance / Tolleranza +/- 10%

CLEANING MATERIALS ARTICOLI PER LA PULIZIA

GO DEVILS TAMPONI IN GOMMA

Rubber Roller Plug-Go Devil
Tamponi in gomma

TP/1
Rubber plugs - one scraper
- suitable for cleaning concrete pipeline.
Tamponi in gomma ad un raschiante, per la pulizia di condotte per calcestruzzo.

TP/2
Rubber plugs - two scrapers
- suitable for cleaning straight concrete pipeline.
Tamponi in gomma a due raschianti, per la pulizia di condotte diritte per calcestruzzo.



| DN | | MODEL | PART NUMBER | Lg. - Lenght | | VERSION | kg | lbs |
|----|-----|----------|-------------|--------------|-----|------------|-------|-------|
| in | mm | Tipo | Codice | in | mm | Esecuzione | | |
| 4" | 100 | TP 100/2 | K3005808 | 6.496 | 165 | TP/2 | 0.890 | 1.962 |
| 5" | 125 | TP 125/1 | K3005809 | 5.905 | 150 | TP/1 | 1.950 | 4.300 |
| 5" | 125 | TP 125/2 | K3005810 | 7.874 | 200 | TP/2 | 2.300 | 5.070 |

CLEANING MATERIALS

ARTICOLI PER LA PULIZIA

ACCESSORIES

ACCESSORI

Cleaning Head
Testa di lavaggio



| DN | | MODEL | PART NUMBER | kg | lbs |
|------|---------|----------|-------------|------|-------|
| in | mm | Tipo | Codice | | |
| 3" | 75 | TDL SC30 | S3005679 | 4.50 | 9.90 |
| 4" | 100/114 | TDL SC40 | S3005682 | 6.90 | 15.20 |
| 4.5" | 100/127 | TDL SC45 | S3005683 | 7.20 | 15.90 |
| 5.5" | 125/148 | TDL SC55 | S3005684 | 8.70 | 19.20 |

Complete with "GU" system weld-on collars. Other collars on request / *Completati di collari del sistema "GU". Altri collari a richiesta*

CLEANING MATERIALS

ARTICOLI PER LA PULIZIA

ACCESSORIES

ACCESSORI

Cleaning Cover
Coperchio di lavaggio



| DN | | MODEL | PART NUMBER | kg | lbs |
|------|---------|----------|-------------|------|------|
| in | mm | Tipo | Codice | | |
| 2" | 50 | CDL SC20 | S3005688 | 1.10 | 2.42 |
| 2.5" | 65 | CDL SC25 | S3034316 | 1.30 | 2.86 |
| 3" | 75 | CDL SC30 | S3005690 | 1.54 | 3.40 |
| 4" | 100/114 | CDL SC40 | S3034317 | 1.83 | 4.03 |
| 4.5" | 100/127 | CDL SC45 | S3034318 | 2.21 | 4.87 |
| 5" | 125/141 | CDL SC50 | S3034319 | 2.43 | 5.36 |
| 5.5" | 125/148 | CDL SC55 | S3016378 | 2.73 | 6.02 |

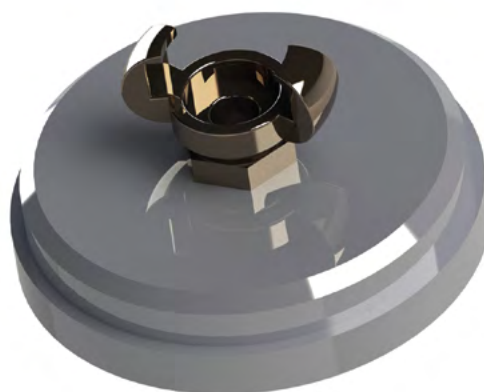
CLEANING MATERIALS

ARTICOLI PER LA PULIZIA

ACCESSORIES

ACCESSORI

Cleaning Flange
Flangia di lavaggio



| DN | | MODEL | PART NUMBER | kg | lbs |
|------|---------|----------|-------------|------|------|
| in | mm | Tipo | Codice | | |
| 3" | 75 | FDL SC30 | S3005674 | 1.00 | 2.20 |
| 4" | 100/114 | FDL SC40 | S3011261 | 1.64 | 3.61 |
| 4.5" | 100/127 | FDL SC45 | S3005676 | 1.95 | 4.30 |
| 5" | 125/141 | FDL SC50 | S3034320 | 2.95 | 6.50 |
| 5.5" | 125/148 | FDL SC55 | S3005678 | 3.25 | 7.16 |

CLEANING MATERIALS ARTICOLI PER LA PULIZIA

ACCESSORIES ACCESSORI

Ball Catcher
Cestello



| DN | | MODEL | PART NUMBER | kg | lbs |
|------|---------|----------|-------------|------|-------|
| in | mm | Tipo | Codice | | |
| 3" | 75 | GST SC30 | S3005668 | 5.30 | 11.70 |
| 4" | 100/114 | GST SC40 | S3005669 | 6.10 | 13.40 |
| 4.5" | 100/127 | GST SC45 | S3005671 | 7.00 | 15.40 |
| 5.5" | 125/148 | GST SC55 | S3005672 | 7.70 | 17.00 |

Complete with "GU" system weld-on collars. Other collars on request. / *Completi di collari del sistema "GU". Altri collari a richiesta.*

Cap with ball stop
Tappo fermo palla



| DN | | MODEL | PART NUMBER | kg | lbs |
|------|---------|----------|-------------|------|-------|
| in | mm | Tipo | Codice | | |
| 3" | 75 | TFP SC30 | S3016586 | 2.31 | 5.09 |
| 4.5" | 100/127 | TFP SC45 | S3010230 | 4.00 | 8.82 |
| 5.5" | 125/148 | TFP SC55 | S3010179 | 5.40 | 11.90 |

100

ACCESSORIES



SUPPORTS

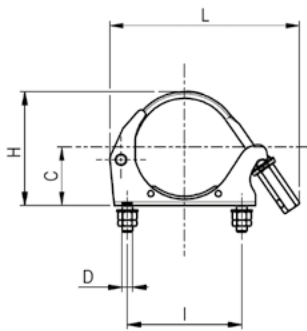
SUPPORTI

PIPE SUPPORT

SUPPORTO PER TUBO

STM Support for pipe

Supporto di ancoraggio per tubo in acciaio



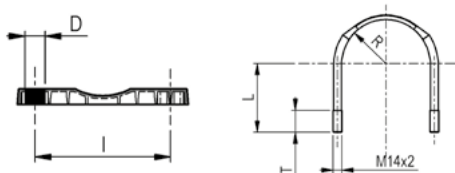
| PART NUMBER - Codice | DESCRIPTION | WEIGHT (Kg) | I | D | C | H | L |
|----------------------|-----------------------------|-------------|-----|------|----|-----|-----|
| K000235240 | PIPE SUPPORT 4" dia 108-114 | 1 | 128 | 14.5 | 68 | 133 | 250 |
| K000234709 | PIPE SUPPORT 5" dia 133-139 | 1.9 | 154 | 14.5 | 83 | 158 | 263 |

- The supports are galvanized
I supporti sono zincati

SUPPORTS SUPPORTI

PIPE SUPPORT SUPPORTO PER TUBO

STU Support for pipe / *Supporto di ancoraggio a "U" per tubo in acciaio*



| PART NUMBER - Codice | DESCRIPTION | WEIGHT (Kg) | I | D | C | H | L |
|----------------------|-------------------------------|-------------|-----|----|----|----|-----|
| S000234705 | U SUPPORT 4" PIPE dia 108-114 | 0.3 | / | / | 57 | 85 | 130 |
| K000234707 | PLASTIC BASE 4" | 0.05 | 123 | 16 | / | / | / |
| S000234706 | U SUPPORT 5" PIPE dia 133-139 | 0.4 | / | / | 70 | 85 | 125 |
| K000234708 | PLASTIC BASE 5" | 0.06 | 150 | 16 | / | / | / |

STG Anchor Support for end hose / *Supporto di ancoraggio per tubo di gomma*



| N.D. - D.N. | | MODEL - Tipo | PART NUMBER - Codice | kg | lbs |
|-------------|---------|--------------|----------------------|----|-----|
| in | mm | | | | |
| 5" | 125/156 | STG 125 | S3010161 | 5 | 11 |

SAFETY PINS

SPINOTTO DI SICUREZZA

SAFETY PIN LP

SPINOTTO DI SICUREZZA LP

LP 05 C

Simple type, used especially on the small and medium sizes of non adjustable couplings (not more than 70 bar)

Tipo semplice, usato specialmente nelle misure piccole e medie di giunti fissi (max. 70 bar)

LP 07 M

It can be used on all types of couplings

Può essere usato su tutti i tipi di giunti

LP 06 STD

It can be used on all types of couplings

Può essere usato su tutti i tipi di giunti



| D.N. | | MODEL - Tipo | PART NUMBER - Codice | kg | lbs |
|-------|------|--------------|----------------------|-------|-------|
| in | mm | | | | |
| 0.197 | 5.00 | LP 05 C | S3009102 | 0.033 | 0.015 |
| 0.275 | 7.00 | LP 07 M | K000910169 | 0.101 | 0.046 |
| 0.275 | 6.50 | STD PIN | K1019738 | 0.101 | 0.046 |

In order to avoid an accidental opening of the coupling, we strongly recommend the use of a Safety Pin.

Per evitare l'apertura accidentale dei giunti, si raccomanda vivamente l'uso dello spinotto di sicurezza.





VALME s.r.l.

Registered Office

Via Vittorio Veneto, 2 - 23010 Rogolo (SO) - IT

Ph. +39 0342 684248

Fax +39 0342 684467

valmesrl@valme.it - valme.it

Plants

Località Sertapassa - 23010 Rogolo (SO) - IT

Zona Industriale

Punta Penna s.n.c. - 66054 Vasto (CH) - IT

VALME North America, Inc.

2701 Nicholas Road - Franksville 53126 WI

Ph. +1 262 732 4109

Fax +1 262 732 4111

sales@valme-na.com

valme-na.com